

# Product Information Packet

January 12, 2017

Data shown is for the current revision model #. Ensure your nameplate model # matches.

<b>Model Number:</b>	<b>5KS511SAA371A</b>
<b>Catalog Number:</b>	<b>Q595</b>
<b>Instruction Manual:</b>	GEI-56128
<b>Connection Diagram:</b>	GEM2034E-FIG20
<b>Outline Drawing:</b>	239C6B00MK

Accessory Connection Diagrams			
<b>Bearing Thermocouple:</b>	None	<b>Heater:</b>	3027JE-1C
<b>RTD:</b>	None	<b>Thermistor:</b>	None
<b>Thermostat:</b>	None	<b>Winding Thermocouple:</b>	None
<b>Bearing RTD:</b>	None		

Table of Contents	
Specification	01
Performance Characteristics	02
Outline Drawing	03
Connection Drawing(s)	04

**Marks:**

<b>MODEL NUMBER:</b>	<b>5KS511SAA371A</b>	<b>Estimated Weight:</b>	5626 Lbs
<b>Outline Drawing:</b>	239C6B00MK	<b>Time Rating:</b>	CONT
<b>Connection Diagram:</b>	GEM2034E-FIG20	<b>Enclosure:</b>	TEFC
<b>Instruction Book:</b>	GEI-56128	<b>Encl Construction:</b>	SD
<b>Design Code:</b>	50BD3097AA	<b>Ambient Max(°C):</b>	40
<b>Type:</b>	KS	<b>Alt Ambient Max(°C):</b>	--
<b>Frame:</b>	5011LL	<b>Insulation Class:</b>	F
<b>Phases:</b>	3	<b>NEMA Design:</b>	--
<b>Poles:</b>	6	<b>Nominal Efficiency:</b>	96.2 %
<b>Output Power:</b>	400HP 296KW	<b>Guaranteed Efficiency:</b>	95.4
<b>RPM:</b>	1190	<b>3/4 Load Efficiency:</b>	96.4
<b>Voltage:</b>	460	<b>KVA Code:</b>	G
<b>Hertz:</b>	60	<b>Max KVAR:</b>	97.0
<b>Amps - FL:</b>	450.0	<b>Power Factor:</b>	86.5
<b>Service Factor:</b>	1.15	<b>Bearing - DE:</b>	6320ZC3
<b>Alt Service Factor:</b>	--	<b>Bearing - ODE:</b>	6315ZC3

**Enclosure is Totally Enclosed Fan-Cooled**

---

**Stamped Nameplate Notes:**

HTR LDS HE1-HE2 115V 350W  
 INVERTER DUTY PER NEMA MG1 PART 31  
 ALTERNATE RATING FOR PWM CONTROL:1.0SF 40C AMBIENT  
 VAR TORQUE RANGE 0-60 HZ  
 FOR DIRECT COUPLED LOAD ONLY

**Additional Information:**

6P - LL EXTN - SPLIT LEAD  
 2500 CU IN - 2(4.00" NPT)  
 C/B GRD PLATE  
 115V HTR LDS TO AUX BOX OPP MAIN CONDUIT BOX  
 SPACE HEATER CAUTION NAMEPLATE  
 NEMA TYPE GRD PAD  
 F1 MOUNTING  
 PROVISION FOR BTD ON BOTH ENDS PLUGGED

**Performance Characteristics**

1st Winding 1st Connection

**Design: 50BD3097AA**

Marks:

LOAD %	125.0	115.0	100.0	75.0	50.0	25.0	0.0
% EFF	95.41	95.67	96.21	96.39	96.37	94.97	0.00
% PF	86.72	86.75	86.37	84.03	77.12	56.7	3.01
AMPS	565.58	518.73	450.73	346.65	251.84	173.8	135.3

TORQ(FL)#FT 1765.44  
 AMPS(LR) 2709.57

TORQ(LR)%FL 102.9  
 PF AT START 0.21

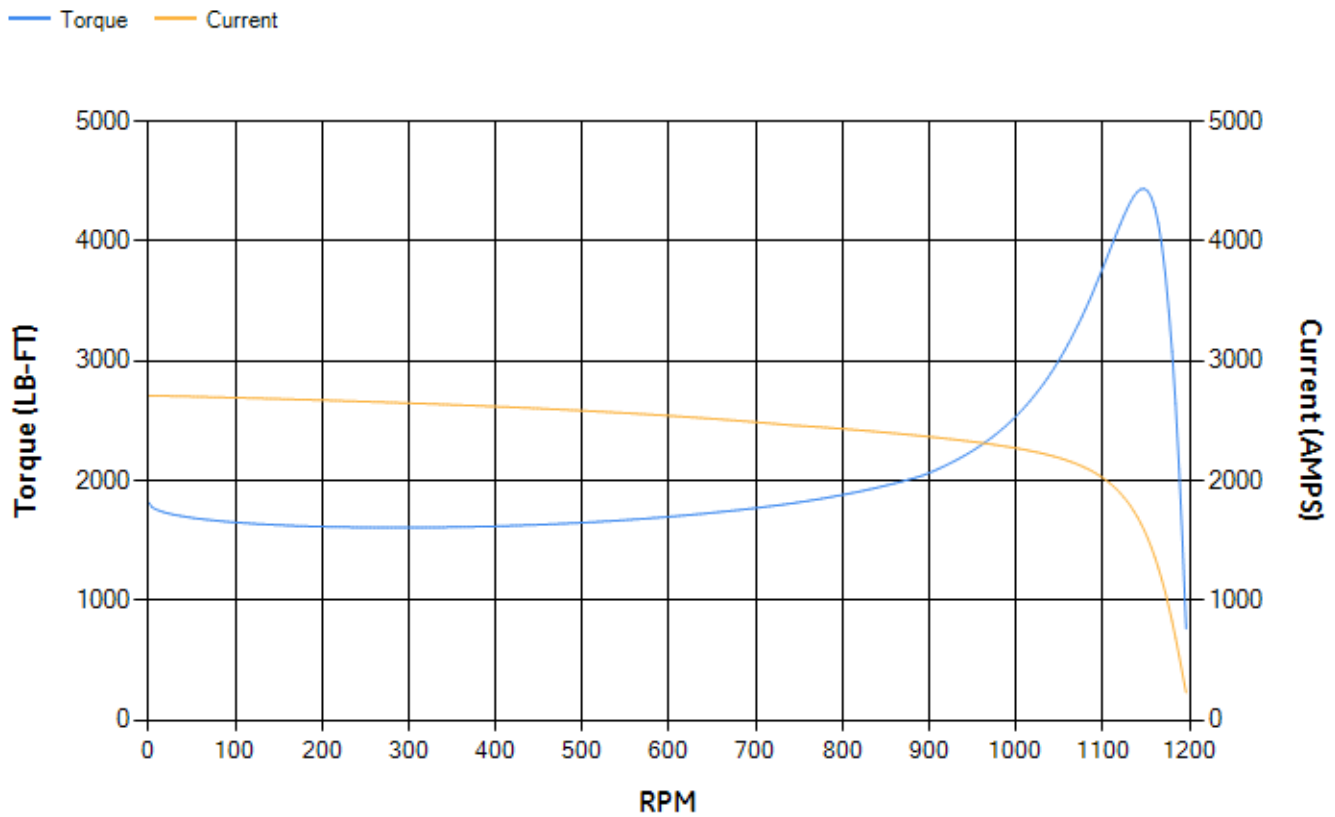
TORQ(BD)%FL 250.89

This motor is capable of two cold or one hot start with a maximum connected load inertia of 19174 Lb-Ft Sq (807.23 Kg-meter Sq)at 100% voltage, where the load torque varies with the square of the speed. Acceleration time with maximum inertia and the above load type is 52 seconds. Safe stall time at 100% voltage is 110 seconds cold, 65 seconds hot. Rotor inertia is 259.82 Lb-Ft Sq (10.94 Kg-meter Sq).

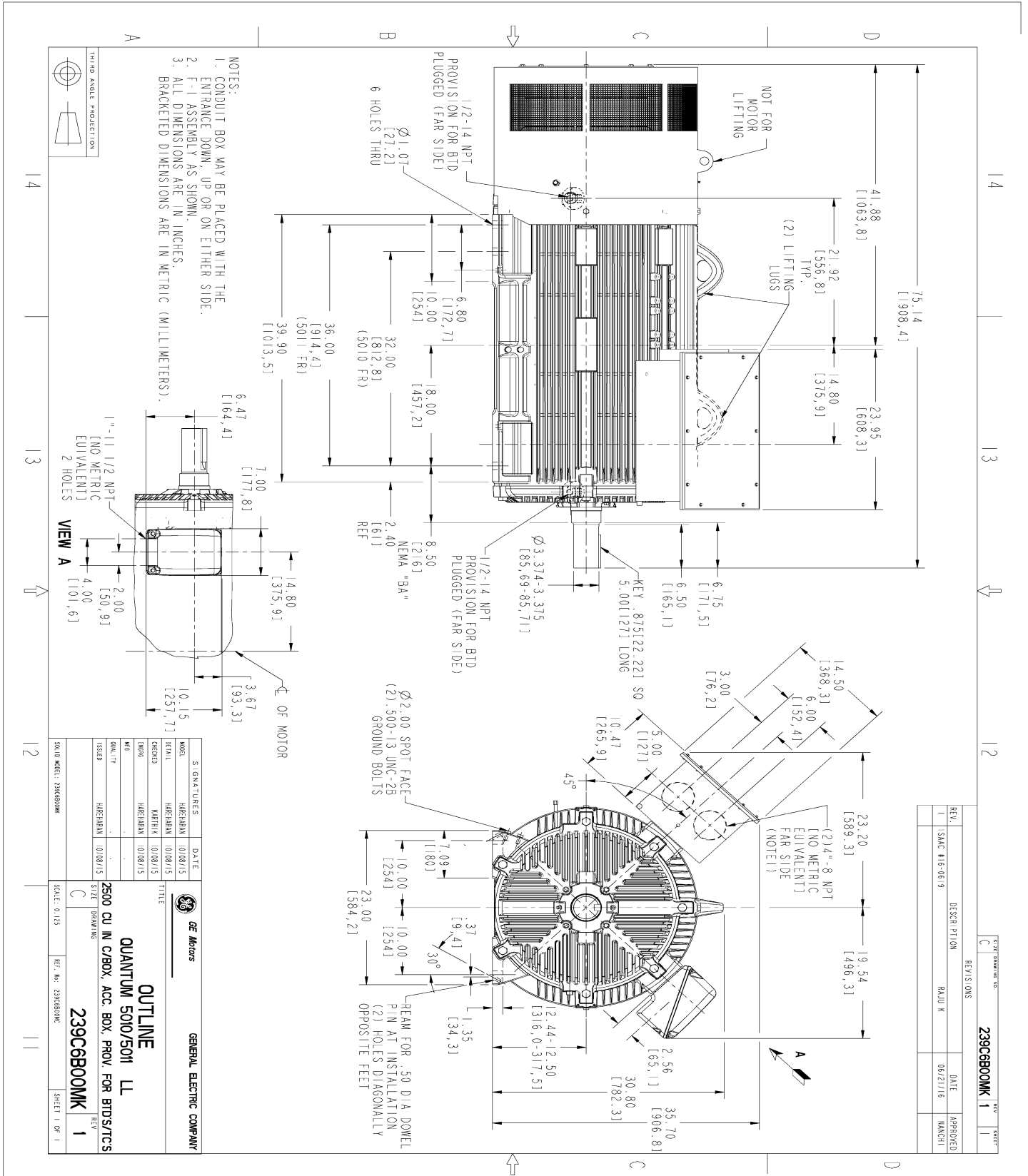
Open Circuit A-C: 1.009  
 Short Circuit A-C: 0.048  
 Stator Slots: 72

Short Circuit D-C: 0.038  
 X/R Ratio: 14.194  
 Rotor Slots: 58

**Speed Torque Current Curve (First Connection, First Speed)**



Marks:



REV.	DESCRIPTION	DATE	APPROVED
1	SAC #16-06-9	06/21/16	MANCH

REV.	DATE	BY	SHEET
1	06/21/16	MANCH	1

REV.	DATE	BY	SHEET
1	06/21/16	MANCH	1

MODEL	SIGNATURES	DATE
5KS511SAA371A	HAEHRMAN	01/08/15
5KS511SAA371A	HAEHRMAN	01/08/15
5KS511SAA371A	HAEHRMAN	01/08/15
5KS511SAA371A	HAEHRMAN	01/08/15

MODEL	DATE	BY	SHEET
5KS511SAA371A	01/08/15	MANCH	1

**GENERAL ELECTRIC COMPANY**

**QUANTUM 5010/5011 LL**

2500 CU IN C/BOX, ACC. BOX, PROV. FOR BTDS/TCS

**239C6B00MK**

Marks:

**Connection Diagram**  
**GEM2034E-FIG20**



**Heater Connection**  
**3027JE-1C**

