

Product Information Packet

May 26, 2017

Data shown is for the current revision model #. Ensure your nameplate model # matches.

Model Number:	5KAF445SAA221A
Catalog Number:	M9321
Instruction Manual:	GEI-56128
Connection Diagram:	GEM2034E-FIG7
Outline Drawing:	239C7600AB

Accessory Connection Diagrams			
Bearing Thermocouple:	None	Heater:	None
RTD:	None	Thermistor:	None
Thermostat:	None	Winding Thermocouple:	None
Bearing RTD:	None		

Table of Contents	
Specification	01
Performance Characteristics	02
Outline Drawing	03
Connection Drawing(s)	04

Marks:

MODEL NUMBER:	5KAF445SAA221A		
Outline Drawing:	239C7600AB	Service Factor:	1.15
Connection Diagram:	GEM2034E-FIG7	Alt Service Factor:	1.00
Instruction Book:	GEI-56128	ASD Type:	
Design Code:	44BD1051A	Time Rating:	CONT
Type:	KAF	Enclosure:	TEBC
Frame:	445T	Encl Construction:	A\$D
Phases:	3	Ambient Max (°C):	40
Poles:	4	Alt Ambient Max(°C):	65
Output Power:	150HP 111KW	Insulation Class:	H
Output Power (2):		NEMA Design:	--
Output Power (3):		Nominal Efficiency:	95.8 %
RPM:	1790	Guaranteed Efficiency:	95.0 %
RPM (2):		3/4 Load Efficiency:	96.4 %
RPM (3):		KVA Code:	G
Voltage:	460	Max KVAR:	41.6
Voltage (2):		Power Factor:	86.5
Voltage (3):		Service Factor SINE:	
Hertz:	60	Service Factor ASD:	
Hertz – 2:		Min Supply Wires:	75 C
Hertz – 3:		IP:	55
Amps – FL:	169.0	Vibration Limit:	--
Amps – FL- 2:		Bearing Lubrication:	MOBIL POLYREX EM
Amps - FL- 3:		Bearing - DE:	6318ZC3
Speed Range RPM:	-	Bearing - ODE:	6318ZC3-VL0241
Const HP RPM:	-	Estimated Weight:	1830 Lbs

Stamped Nameplate Notes:

ALTERNATE RATING INVERTER DUTY 1.0 SF 40C AMBIENT
 SUITABLE FOR CONSTANT TORQUE;PWM OPERATION;0-60HZ
 THERMOSTAT LEADS PC-PC TRIP

Additional Information:

4P - T EXTN
 700 CU IN - 3.00" NPT
 E/S GROUND BOLT MTD ON DE C/BOX SIDE NEAR FOOT
 OIL RESISTANT SLEEVING ON LEADS
 TACH PROVISION MOTOR
 N.C. TRIP TSTAT LDS TO MAIN CONDUIT BOX
 PAINTED ODE ACCESSORY RABBET
 SHAFT GROUND RING #235A4970AG8 MOUNTED ON
 DE BEARING CAP

BLOWER MOTOR 208-230/460V,6.2-5.8/2.9AMPS,2HP
BLOWER MOTOR 60/50HZ,1725/1425RPM

Performance Characteristics

1st Winding 1st Connection

Design: 44BD1051A

Marks:

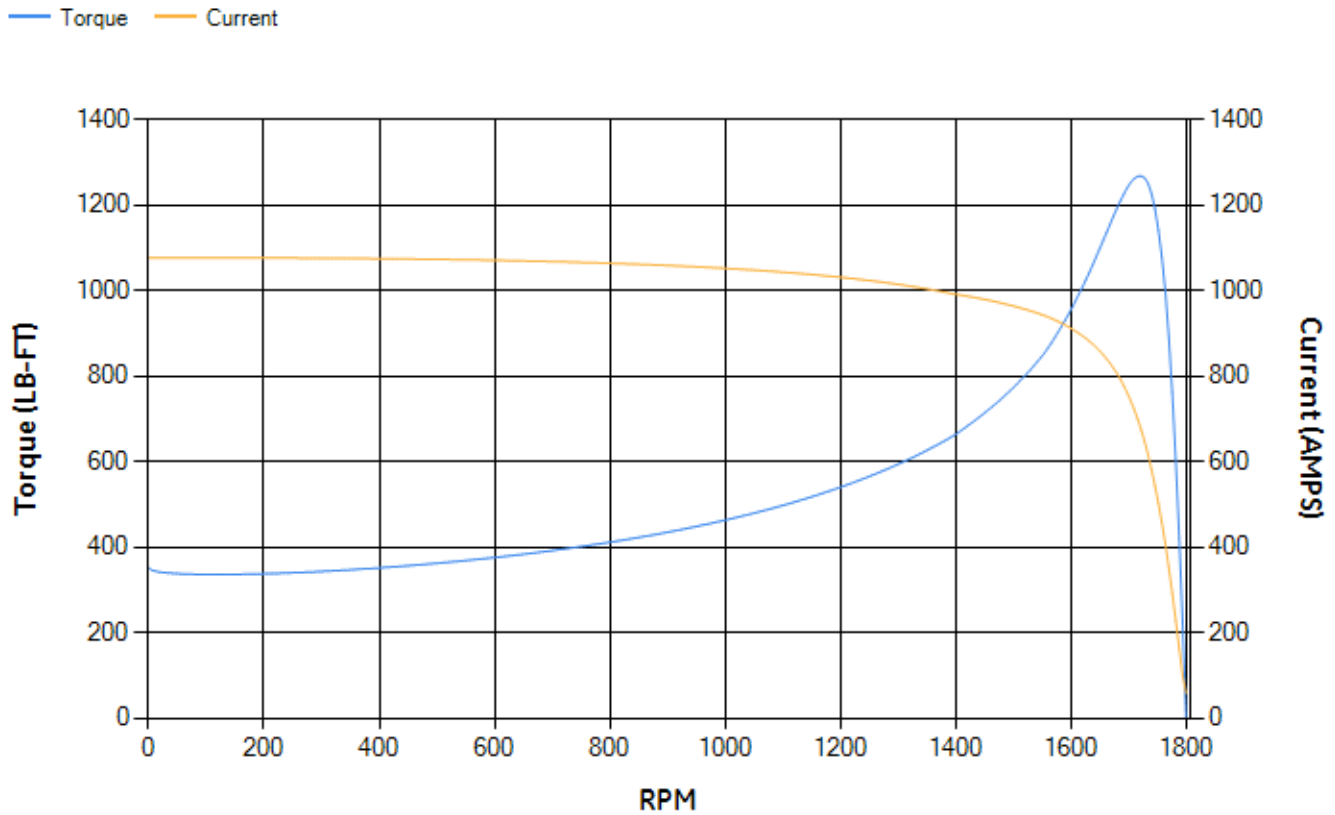
LOAD %	125.0	115.0	100.0	75.0	50.0	25.0	0.0
% EFF	95.71	95.9	96.35	96.38	96.19	94.44	0.00
% PF	87.93	87.58	86.62	83.18	74.7	52.64	2.98
AMPS	208.52	192.22	168.22	131.34	97.69	70.6	57.84

TORQ(FL)#FT	440.85	TORQ(LR)%FL	79.71	TORQ(BD)%FL	287.08
AMPS(LR)	1075.98	PF AT START	0.19		

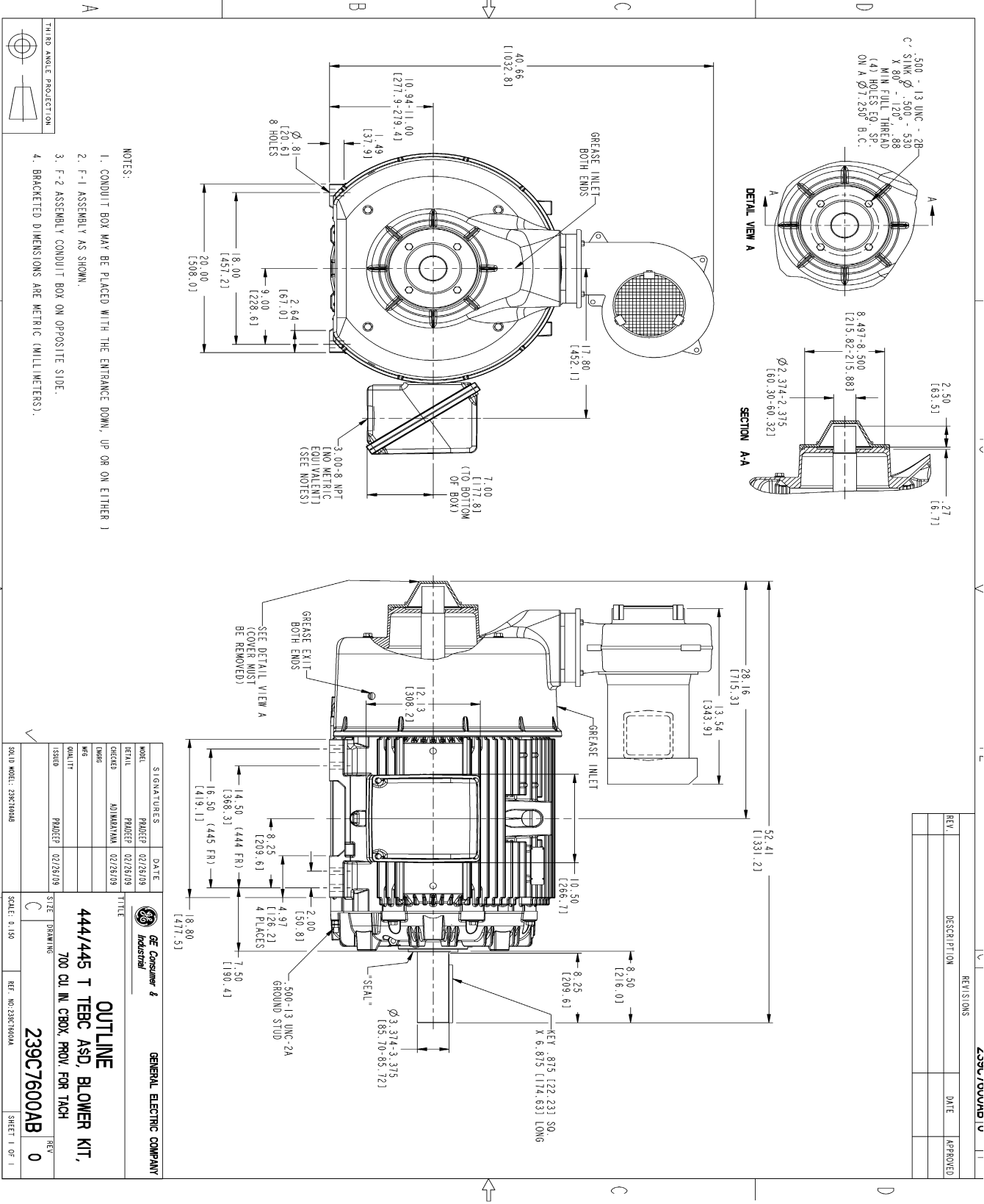
This motor is capable of two cold or one hot start with a maximum connected load inertia of 4387 Lb-Ft Sq (184.69 Kg-meter Sq)at 100% voltage, where the load torque varies with the square of the speed. Acceleration time with maximum inertia and the above load type is 68 seconds. Safe stall time at 100% voltage is 145 seconds cold, 81 seconds hot. Rotor inertia is 49.63 Lb-Ft Sq (2.09 Kg-meter Sq).

Open Circuit A-C:	0.982	Short Circuit D-C:	0.03
Short Circuit A-C:	0.05	X/R Ratio:	11.429
Stator Slots:	72	Rotor Slots:	58

Speed Torque Current Curve (First Connection, First Speed)



Marks:



- NOTES:
1. CONDUIT BOX MAY BE PLACED WITH THE ENTRANCE DOWN, UP OR ON EITHER)
 2. F-1 ASSEMBLY AS SHOWN.
 3. F-2 ASSEMBLY CONDUIT BOX ON OPPOSITE SIDE.
 4. BRACKETED DIMENSIONS ARE METRIC (MILLIMETERS).

REV.	DESCRIPTION	REVISIONS	DATE	APPROVED

SIGNATURES		DATE	
MODEL	PROJEC	02/28/09	
DETAIL	PROJEC	02/28/09	
CHECKED	ANURAMA	02/28/09	
DRAWN			
ISSUED	PROJEC	02/28/09	
TITLE		GENERAL ELECTRIC COMPANY	
444/445 T TERC ASD, BLOWER KIT,			
700 CU IN. CBX. PROV. FOR TACH			
239C7600AB			
SCALE: 0.150			
REF. NO: 239C7600AA			
SHEET 1 OF 1			

Marks:

Connection Diagram
GEM2034E-FIG7

