

# Product Information Packet

July 16, 2017

Data shown is for the current revision model #. Ensure your nameplate model # matches.

<b>Model Number:</b>	<b>5KS445SAJ6008A</b>
<b>Catalog Number:</b>	<b>V4717</b>
<b>Instruction Manual:</b>	GEK-95351
<b>Connection Diagram:</b>	GEM2034E-FIG1
<b>Outline Drawing:</b>	148CB44TMHKCCLA0001

Accessory Connection Diagrams			
<b>Bearing Thermocouple:</b>	None	<b>Heater:</b>	3027JE-1C
<b>RTD:</b>	None	<b>Thermistor:</b>	None
<b>Thermostat:</b>	3027JE-2A	<b>Winding Thermocouple:</b>	None
<b>Bearing RTD:</b>	None		

## Table of Contents

Specification	01
Performance Characteristics	02
Outline Drawing	03
Connection Drawing(s)	04
Spare parts	05



**Marks:**

<b>MODEL NUMBER:</b>	<b>5KS445SAJ6008A</b>	<b>Estimated Weight:</b>	2000 Lbs
<b>Outline Drawing:</b>	148CB44TMHKCCLA0001	<b>Time Rating:</b>	CONT
<b>Connection Diagram:</b>	GEM2034E-FIG1	<b>Enclosure:</b>	TEFC
<b>Instruction Book:</b>	GEK-95351	<b>Encl Construction:</b>	X\$D
<b>Design Code:</b>	44BD1119AB	<b>Ambient Max(°C):</b>	40
<b>Type:</b>	KS	<b>Alt Ambient Max(°C):</b>	--
<b>Frame:</b>	L445TP16	<b>Insulation Class:</b>	H
<b>Phases:</b>	3	<b>NEMA Design:</b>	B
<b>Poles:</b>	4	<b>Nominal Efficiency:</b>	95.8 %
<b>Output Power:</b>	150HP 111KW	<b>Guaranteed Efficiency:</b>	95.4 %
<b>RPM:</b>	1780	<b>3/4 Load Efficiency:</b>	95.5 %
<b>Voltage:</b>	460	<b>KVA Code:</b>	G
<b>Hertz:</b>	60	<b>Max KVAR:</b>	38.5
<b>Amps - FL:</b>	169.0	<b>Power Factor:</b>	87.0
<b>Service Factor:</b>	1.15	<b>Bearing - DE:</b>	6217C3
<b>Alt Service Factor:</b>	--	<b>Bearing - ODE:</b>	235A2536AB01

**Enclosure is Totally Enclosed Fan-Cooled**

**Stamped Nameplate Notes:**

HTR LDS HE1-HE2 115V 145W  
 ROT CCW FACING ODE LEAD/PH SEQ 1-2-3/1-2-3  
 THERMOSTAT LEADS TB1-TB2 TRIP  
 INVERTER DUTY PER NEMA MG1 PART 31  
 ALTERNATE RATING FOR PWM CONTROL:1.0SF 40C AMBIENT  
 VAR TORQUE RANGE 5-60 HZ  
 SUITABLE FOR 125 HP, 380V, 50 HZ WITH  
 170.0 AMPS AND 1480 RPM AT 1.00 SF

**Additional Information:**

4 POLE, VERT HOLLOW SHAFT HIGH THRUST (1D)  
 700 CU IN - 3.00" NPT  
 BEARING LIFE 8760 HRS AT 13500 LB THRUST  
 OIL RESISTANT SLEEVING ON LEADS  
 N.C. TRIP TSTAT LDS TO MAIN CONDUIT BOX  
 115V HTR LDS TO MAIN CONDUIT BOX  
 COUPLING NOT INCLUDED IN BOM, WILL BE  
 ORDERED SEPERATELY  
 SHAFT GROUNDING RING MOUNTED ON DE BRG CAP  
 INSULATED LOWER HALF COUPLING

**Performance Characteristics**

1st Winding 1st Connection

**Design: 44BD1119AB**

**Marks:**

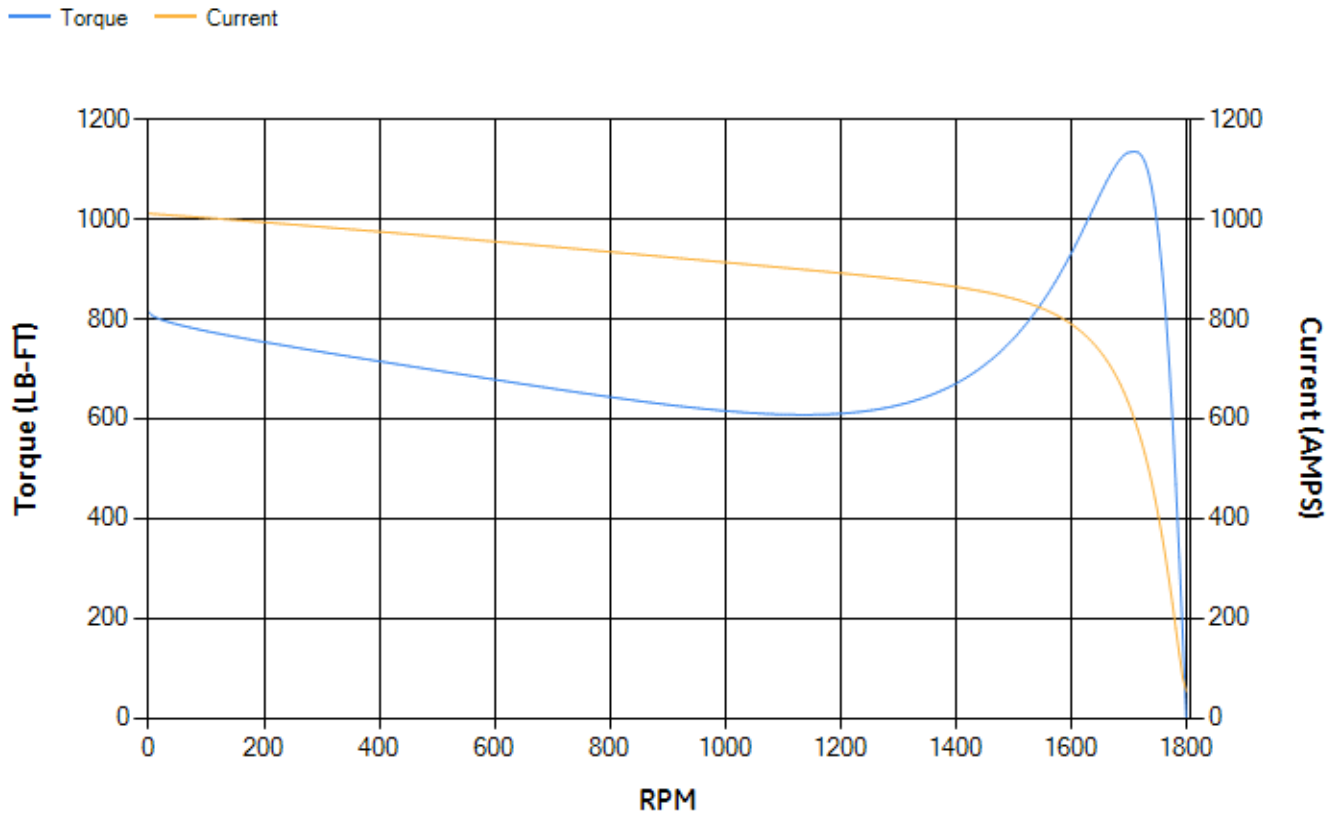
LOAD %	125.0	115.0	100.0	75.0	50.0	25.0	0.0
% EFF	94.7	94.9	95.33	95.27	94.79	92.06	0.00
% PF	88.05	87.87	87.19	84.36	76.89	56.16	4.91
AMPS	210.47	193.62	168.92	131.01	96.32	67.88	53.69

<b>TORQ(FL)#FT</b>	442.23	<b>TORQ(LR)%FL</b>	184.08	<b>TORQ(BD)%FL</b>	256.21
<b>AMPS(LR)</b>	1011.1	<b>PF AT START</b>	0.33		

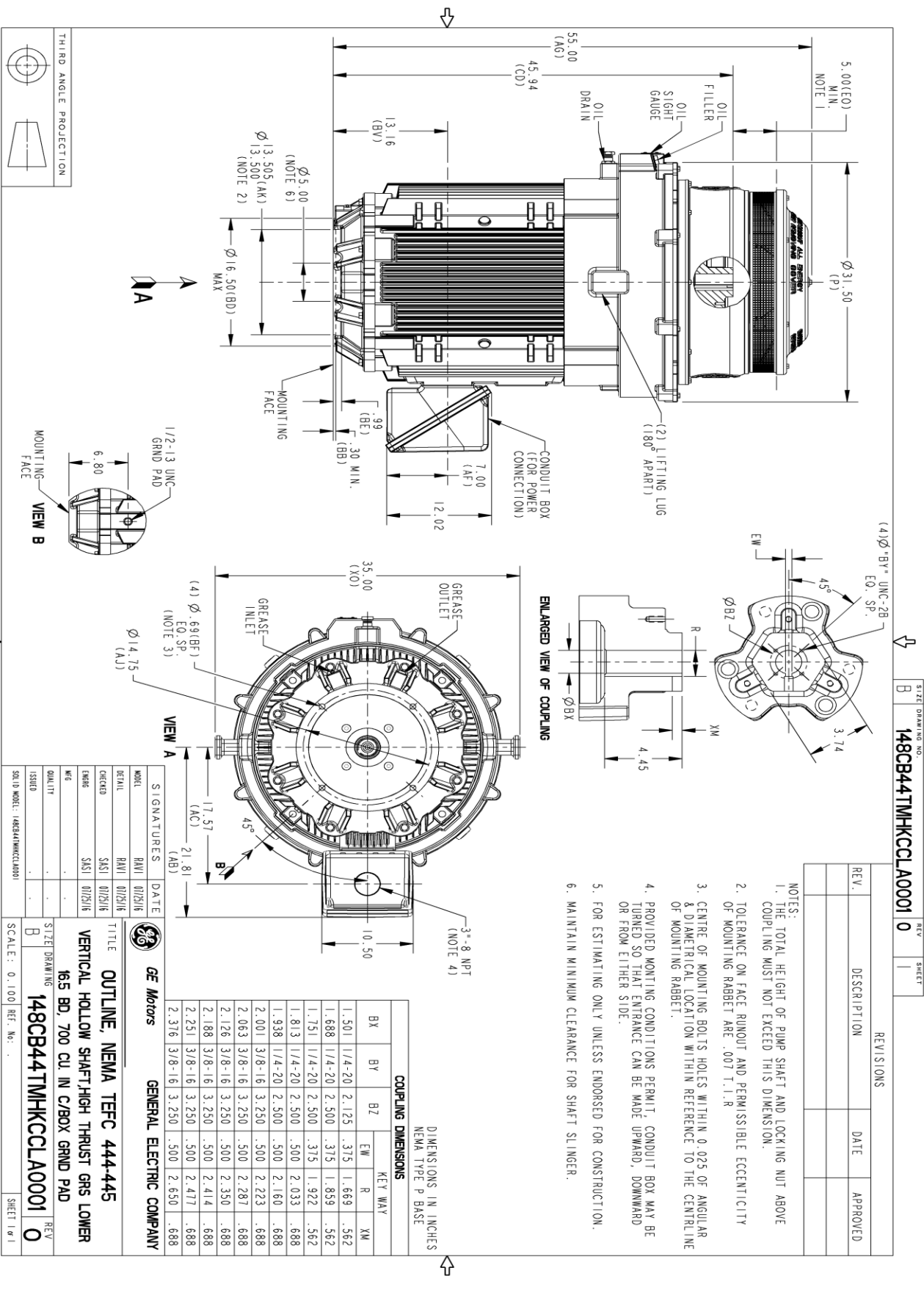
This motor is capable of two cold or one hot start with a maximum connected load inertia of 2303 Lb-Ft Sq (96.96 Kg-meter Sq)at 100% voltage, where the load torque varies with the square of the speed. Acceleration time with maximum inertia and the above load type is 24 seconds. Safe stall time at 100% voltage is 58 seconds cold, 29 seconds hot. Rotor inertia is 66.75 Lb-Ft Sq (2.81 Kg-meter Sq).

<b>Open Circuit A-C:</b>	0.767	<b>Short Circuit D-C:</b>	0.03
<b>Short Circuit A-C:</b>	0.037	<b>X/R Ratio:</b>	11.28
<b>Stator Slots:</b>	72	<b>Rotor Slots:</b>	58

**Speed Torque Current Curve (First Connection, First Speed)**

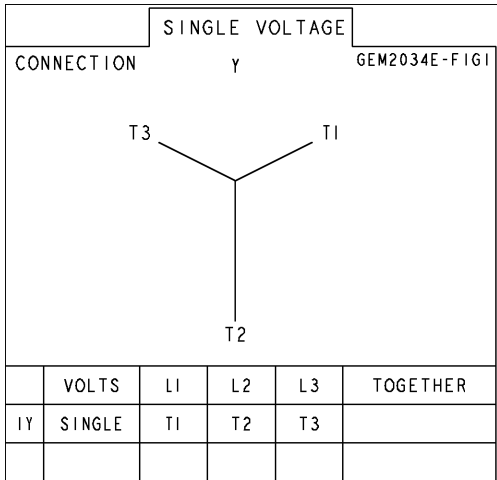


Marks:

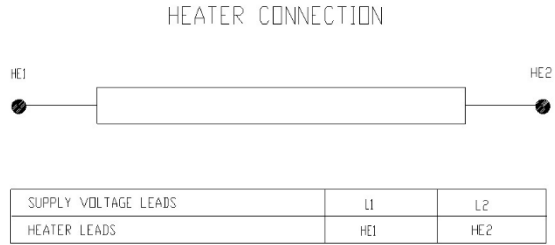


Marks:

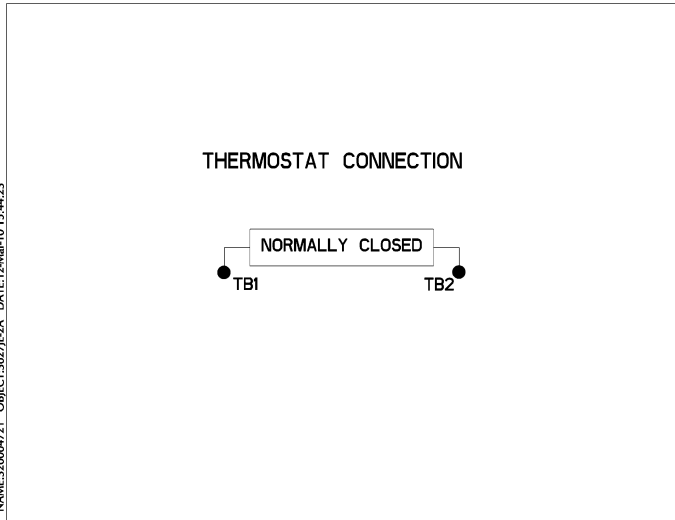
**Connection Diagram**  
**GEM2034E-FIG1**



**Heater Connection**  
**3027JE-1C**



**Thermostat Connection**  
**3027JE-2A**



NAME:32000471 OBJECT:3027JE-2A DATE:12-Mar-10 15:44:23

End shield Assembly		
Part Description	DE Side Part#	ODE Side Part#
End Shield	115E8660AA1	115E8670LA1
Bearing	235A2522AJ01	235A2536AB01
Slinger/Inproseal	149C4399G06	

Fan & Fan Cover Assembly	
Part Description	Part#
Fan	159C7100AE2
Fan Cover	128D6847AA1

Conduit & Accessories Box Assembly	
Part Description	Part#
Conduit Box	118D4408AD2

Mechanical Accessories	
Part Description	Part#
Brake	
Tachometer	