

Product Information Packet

November 8, 2016

Data shown is for the current revision model #. Ensure your nameplate model # matches.

Model Number:	5KS254STE204A
Catalog Number:	M7530
Instruction Manual:	GEI-M1031
Connection Diagram:	GEM2034E-FIG7
Outline Drawing:	358B6272AA

Accessory Connection Diagrams			
Bearing Thermocouple:	None	Heater:	None
RTD:	None	Thermistor:	None
Thermostat:	None	Winding Thermocouple:	None
Bearing RTD:	None		

Table of Contents	
Specification	01
Performance Characteristics	02
Outline Drawing	03
Connection Drawing(s)	04

Marks:

MODEL NUMBER:	5KS254STE204A	Estimated Weight:	277 Lbs
Outline Drawing:	358B6272AA	Time Rating:	CONT
Connection Diagram:	GEM2034E-FIG7	Enclosure:	TEFC
Instruction Book:	GEI-M1031	Encl Construction:	SD
Design Code:	25AD1014B	Ambient Max(°C):	40
Type:	KS	Alt Ambient Max(°C):	--
Frame:	254T	Insulation Class:	F
Phases:	3	NEMA Design:	A
Poles:	4	Nominal Efficiency:	92.4 %
Output Power:	15HP 11.1KW	Guaranteed Efficiency:	91.0
RPM:	1765	3/4 Load Efficiency:	93.1
Voltage:	575	KVA Code:	H
Hertz:	60	Max KVAR:	4.4
Amps - FL:	14.4	Power Factor:	84.5
Service Factor:	1.15	Bearing - DE:	6310ZZ
Alt Service Factor:	--	Bearing - ODE:	6208ZZ

Enclosure is Totally Enclosed Fan-Cooled

Stamped Nameplate Notes:**Additional Information:**

4 POLE, TEFC, LRA: 97.7 AMPS
 SOUND POWER : 84 DBA
 GREASE: SHELL ALVANIA R3 LITHIUM GREASE
 NO. OF MOTOR LEADS: 3
 CONDUIT BOX VOLUME (CU IN): 100.5
 CONDUIT BOX MATERIAL: CAST IRON
 SUITABLE FOR USE IN CLASS I DIVISION 2 LOCATIONS
 CLASS I DIVISION 2 GROUPS A,B,C,D T3C
 CLASS I ZONE 2 IIC T3C

Performance Characteristics

1st Winding 1st Connection

Design: 25AD1014B

Marks:

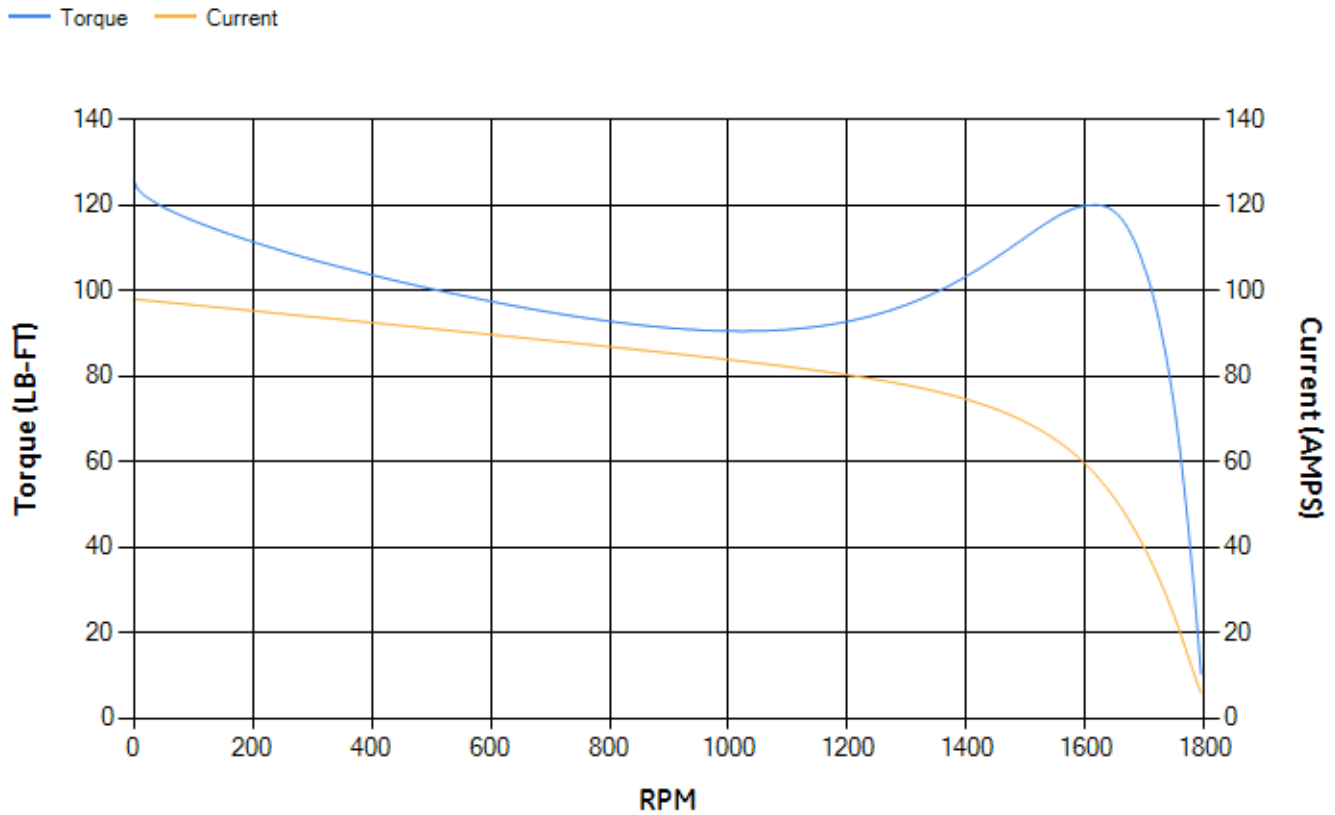
LOAD %	125.0	115.0	100.0	75.0	50.0	25.0	0.0
% EFF	91.75	92.15	92.83	93.05	92.59	89.11	0.00
% PF	85.63	85.4	84.58	81.27	73.01	52.15	6.08
AMPS	17.87	16.41	14.3	11.14	8.31	6.04	4.89

TORQ(FL)#FT	44.57	TORQ(LR)%FL	282.28	TORQ(BD)%FL	267.37
AMPS(LR)	97.94	PF AT START	0.44		

This motor is capable of two cold or one hot start with a maximum connected load inertia of 622 Lb-Ft Sq (26.19 Kg-meter Sq)at 100% voltage, where the load torque varies with the square of the speed. Acceleration time with maximum inertia and the above load type is 42 seconds. Safe stall time at 100% voltage is 71 seconds cold, 56 seconds hot. Rotor inertia is 2.02 Lb-Ft Sq (0.09 Kg-meter Sq).

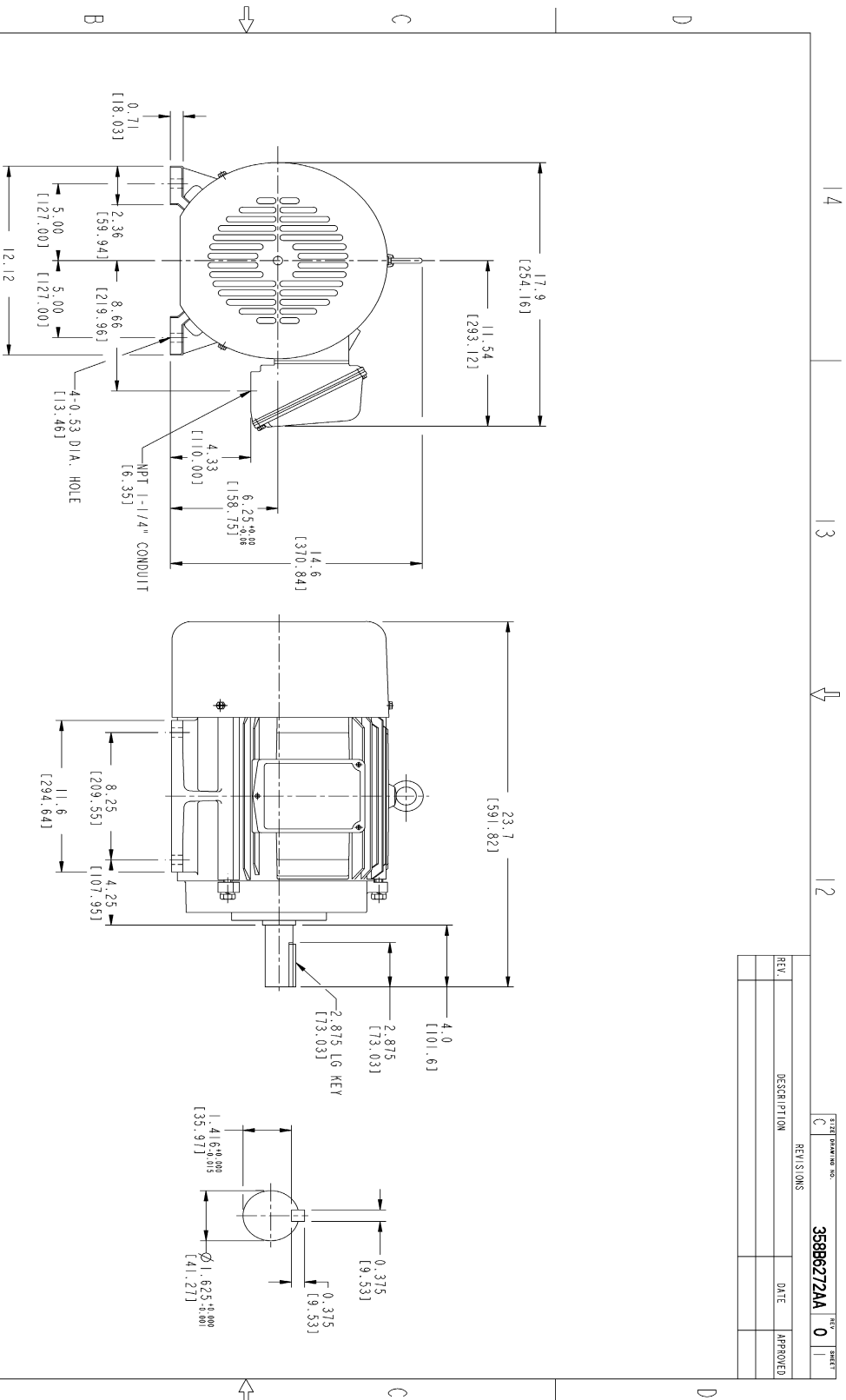
Open Circuit A-C:	0.416	Short Circuit D-C:	0.016
Short Circuit A-C:	0.018	X/R Ratio:	6.067
Stator Slots:	48	Rotor Slots:	40

Speed Torque Current Curve (First Connection, First Speed)



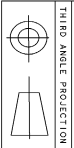
NAME:501291659 OBJECT:358B6272AA DATE:05-Dec-07 10:14:57

Marks:



NOTES :

1. DIMENSIONS ARE IN INCHES.
2. F-1 ASM AS SHOWN.
3. F-2 ASM - HAS CONDUIT BOX ON OPPOSITE SIDE.
4. BRACKETED DIMENSIONS ARE METRIC (MILLIMETERS)
5. IC411, IP54, IMB34 APPLY



Part must conform to SI 9000000 Sect. 4, Toxicity Procedure

FOR ADDITIONAL INFO REFER TO:	SIGNATURES	DATE
APPLICABLE SPECIFICATIONS	MODEL	11/05/07
UNLESS OTHERWISE SPECIFIED	SOUGHTA	11/05/07
DIMENSIONS ARE IN INCHES	SANAT	11/05/07
TOLERANCE ON:	SKEDS	11/05/07
1 PL DECIMALS ±	R. KOHNE	11/05/07
2 PL DECIMALS ±		
3 PL DECIMALS ±		
ANGLES ±		
FRACTIONS ±		
FINISH	ISSUED	11/05/07
✓	SOUGHTA	

TITLE	SCALE	SHEET
OUTLINE	C	0
FID - 254T TERC CE MARK		
100S CU IN CONDUIT BOX		
358B6272AA		
REV		
0		

REV.	DESCRIPTION	DATE	APPROVED

358B6272AA 0 1

Marks:

Connection Diagram
GEM2034E-FIG7

