

Product Information Packet

April 28, 2017

Data shown is for the current revision model #. Ensure your nameplate model # matches.

Model Number:	5KS447SAJ6008A
Catalog Number:	V4718
Instruction Manual:	GEK-95351
Connection Diagram:	GEM2034E-FIG7
Outline Drawing:	148CB49TMHKCCLA0001

Accessory Connection Diagrams			
Bearing Thermocouple:	None	Heater:	3027JE-1C
RTD:	None	Thermistor:	None
Thermostat:	3027JE-2A	Winding Thermocouple:	None
Bearing RTD:	None		

Table of Contents

Specification	01
Performance Characteristics	02
Outline Drawing	03
Connection Drawing(s)	04
Spare parts	05



Marks:

MODEL NUMBER:	5KS447SAJ6008A	Estimated Weight:	2770 Lbs
Outline Drawing:	148CB49TMHKCCLA0001	Time Rating:	CONT
Connection Diagram:	GEM2034E-FIG7	Enclosure:	TEFC
Instruction Book:	GEK-95351	Encl Construction:	X\$D
Design Code:	49BD1177AC	Ambient Max(°C):	40
Type:	KS	Alt Ambient Max(°C):	--
Frame:	L447TP16	Insulation Class:	H
Phases:	3	NEMA Design:	B
Poles:	4	Nominal Efficiency:	96.2 %
Output Power:	200HP 148KW	Guaranteed Efficiency:	95.8
RPM:	1790	3/4 Load Efficiency:	96.2
Voltage:	460	KVA Code:	G
Hertz:	60	Max KVAR:	43.5
Amps - FL:	220.0	Power Factor:	89.0
Service Factor:	1.15	Bearing - DE:	6217C3
Alt Service Factor:	--	Bearing - ODE:	235A2536AB01

Enclosure is Totally Enclosed Fan-Cooled

Stamped Nameplate Notes:

HTR LDS HE1-HE2 115V 145W
 ROT CCW FACING ODE LEAD/PH SEQ 1-2-3/1-2-3
 THERMOSTAT LEADS TB1-TB2 TRIP
 INVERTER DUTY PER NEMA MG1 PART 31
 ALTERNATE RATING FOR PWM CONTROL:1.0SF 40C AMBIENT
 VAR TORQUE RANGE 5-60 HZ
 SUITABLE FOR 150 HP, 380V, 50 HZ WITH
 200.0 AMPS AND 1490 RPM AT 1.00 SF

Additional Information:

4 POLE, VERT HOLLOW SHAFT HIGH THRUST (1D)
 700 CU IN - 3.00" NPT
 BEARING LIFE 8760 HRS AT 13200 LB THRUST
 OIL RESISTANT SLEEVING ON LEADS
 N.C. TRIP TSTAT LDS TO MAIN CONDUIT BOX
 115V HTR LDS TO MAIN CONDUIT BOX
 COUPLING NOT INCLUDED IN BOM, WILL BE
 ORDERED SEPERATELY
 SHAFT GROUNDING RING MOUNTED ON DE BRG CAP
 INSULATED LOWER HALF COUPLING

Performance Characteristics

1st Winding 1st Connection

Design: 49BD1177AC

Marks:

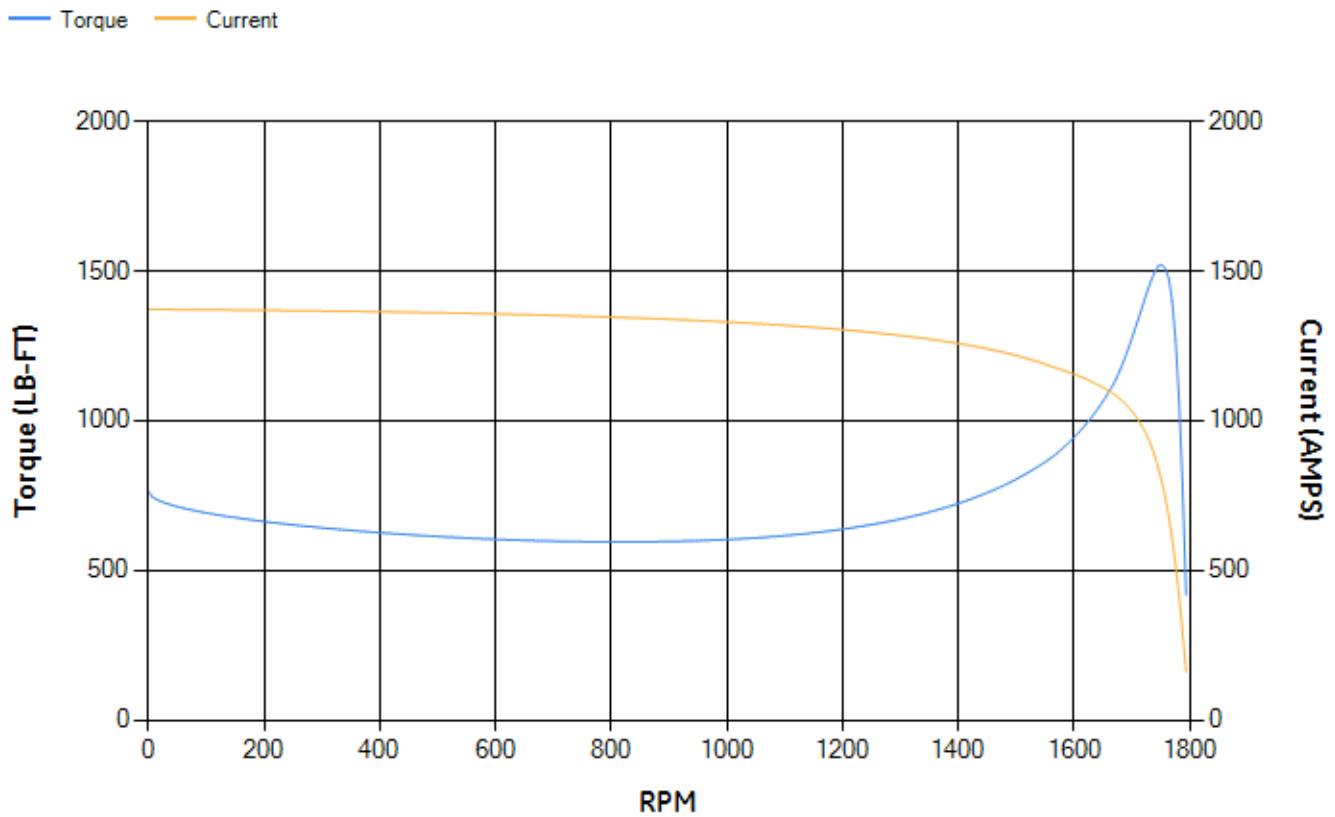
LOAD %	125.0	115.0	100.0	75.0	50.0	25.0	0.0
% EFF	95.24	95.46	95.93	95.98	95.74	93.74	0.00
% PF	89.2	89.18	88.79	86.7	80.56	61.36	4.37
AMPS	275.39	252.87	219.77	168.71	121.35	81.36	60.61

TORQ(FL)#FT	586.57	TORQ(LR)%FL	130.07	TORQ(BD)%FL	259.11
AMPS(LR)	1371.63	PF AT START	0.25		

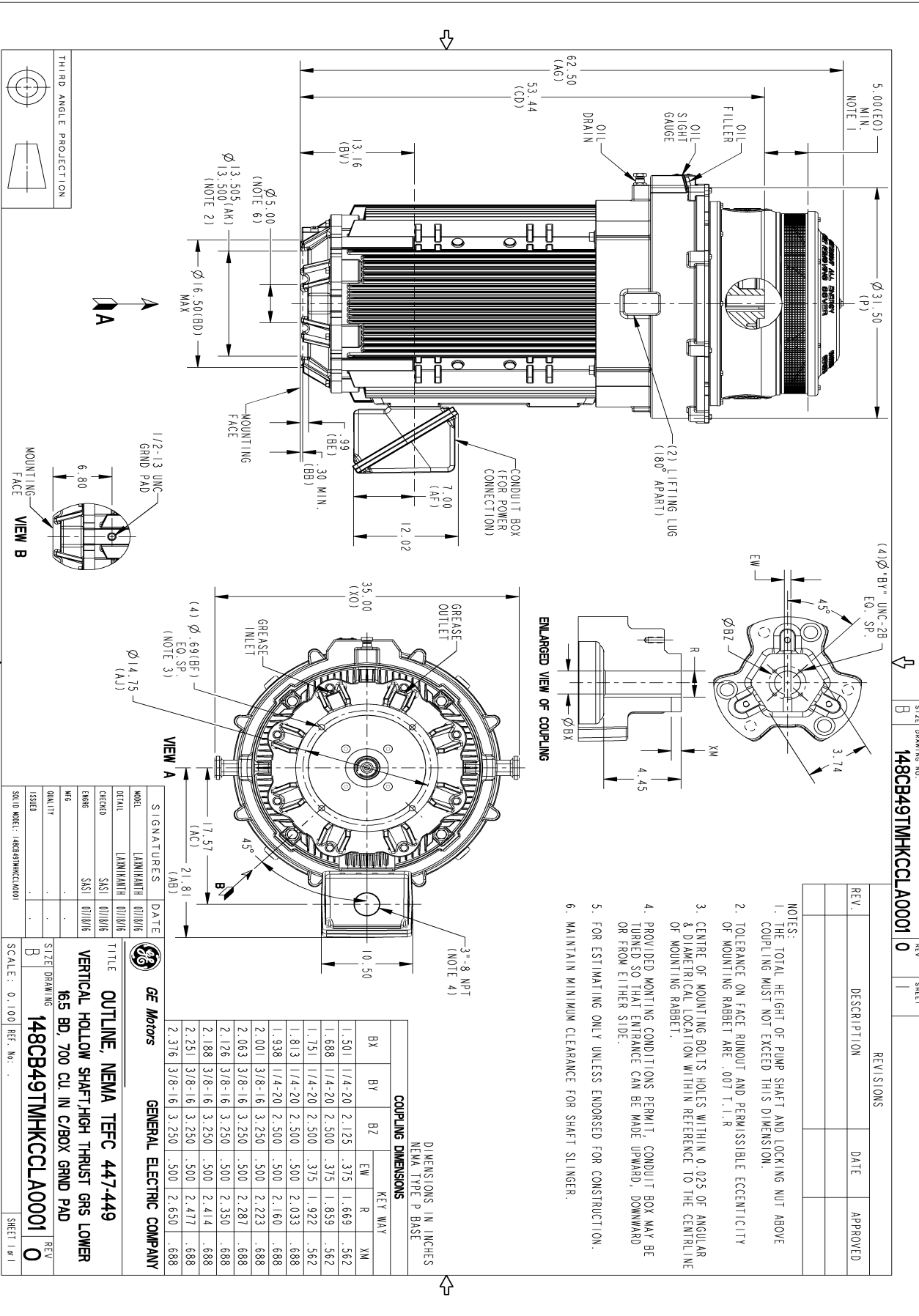
This motor is capable of two cold or one hot start with a maximum connected load inertia of 4664 Lb-Ft Sq (196.35 Kg-meter Sq)at 100% voltage, where the load torque varies with the square of the speed. Acceleration time with maximum inertia and the above load type is 54 seconds. Safe stall time at 100% voltage is 163 seconds cold, 83 seconds hot. Rotor inertia is 106.11 Lb-Ft Sq (4.47 Kg-meter Sq).

Open Circuit A-C:	1.746	Short Circuit D-C:	0.027
Short Circuit A-C:	0.069	X/R Ratio:	10.237
Stator Slots:	72	Rotor Slots:	58

Speed Torque Current Curve (First Connection, First Speed)

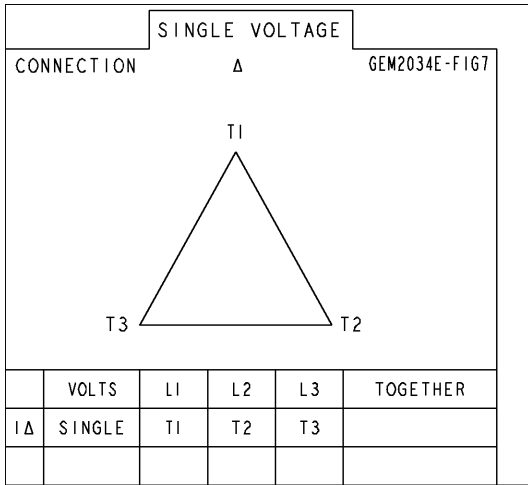


Marks:

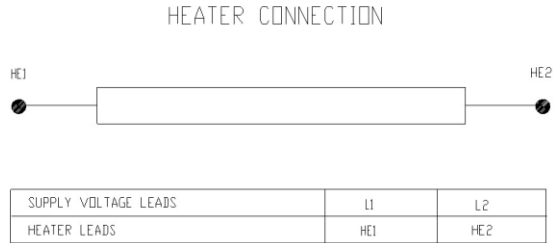


Marks:

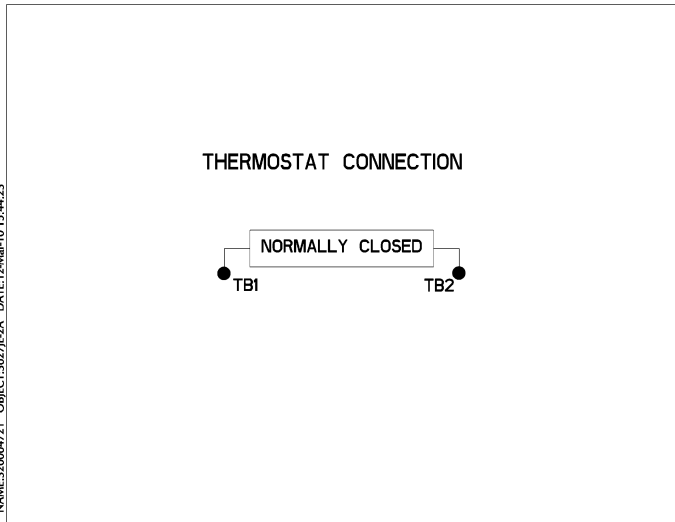
Connection Diagram
GEM2034E-FIG7



Heater Connection
3027JE-1C



Thermostat Connection
3027JE-2A



NAME:32000471 OBJECT:3027JE-2A DATE:12-Mar-10 15:44:23

End shield Assembly		
Part Description	DE Side Part#	ODE Side Part#
End Shield	115E8660AA1	115E8670LA1
Bearing	235A2522AJ01	235A2536AB01
Slinger/Inproseal	149C4399G06	

Fan & Fan Cover Assembly	
Part Description	Part#
Fan	159C7100AE2
Fan Cover	128D6847AA1

Conduit & Accessories Box Assembly	
Part Description	Part#
Conduit Box	118D4408AD2

Mechanical Accessories	
Part Description	Part#
Brake	
Tachometer	