

# Product Information Packet

November 7, 2016

Data shown is for the current revision model #. Ensure your nameplate model # matches.

<b>Model Number:</b>	<b>5KS143ATE205AF2</b>
<b>Catalog Number:</b>	<b>E792</b>
<b>Instruction Manual:</b>	GEI-M1023
<b>Connection Diagram:</b>	GEM2034E-FIG3
<b>Outline Drawing:</b>	358B6213AA

Accessory Connection Diagrams			
<b>Bearing Thermocouple:</b>	None	<b>Heater:</b>	None
<b>RTD:</b>	None	<b>Thermistor:</b>	None
<b>Thermostat:</b>	None	<b>Winding Thermocouple:</b>	None
<b>Bearing RTD:</b>	None		

Table of Contents	
Specification	01
Performance Characteristics	02
Outline Drawing	03
Connection Drawing(s)	04

**Marks:**

<b>MODEL NUMBER:</b>	<b>5KS143ATE205AF2</b>	<b>Estimated Weight:</b>	48 Lbs
<b>Outline Drawing:</b>	358B6213AA	<b>Time Rating:</b>	CONT
<b>Connection Diagram:</b>	GEM2034E-FIG3	<b>Enclosure:</b>	DP
<b>Instruction Book:</b>	GEI-M1023	<b>Encl Construction:</b>	OPEN
<b>Design Code:</b>	14AD1003A	<b>Ambient Max(°C):</b>	40
<b>Type:</b>	KS	<b>Alt Ambient Max(°C):</b>	--
<b>Frame:</b>	143T	<b>Insulation Class:</b>	F
<b>Phases:</b>	3	<b>NEMA Design:</b>	B
<b>Poles:</b>	4	<b>Nominal Efficiency:</b>	85.5 %
<b>Output Power:</b>	1HP 0.7KW	<b>Guaranteed Efficiency:</b>	82.5
<b>RPM:</b>	1735	<b>3/4 Load Efficiency:</b>	87.9
<b>Voltage:</b>	230/460	<b>KVA Code:</b>	N
<b>Hertz:</b>	60	<b>Max KVAR:</b>	.5
<b>Amps - FL:</b>	2.8/1.4	<b>Power Factor:</b>	77.5
<b>Service Factor:</b>	1.15	<b>Bearing - DE:</b>	6205ZZ
<b>Alt Service Factor:</b>	--	<b>Bearing - ODE:</b>	6205ZZ

Enclosure is Dripproof

---

**Stamped Nameplate Notes:****Additional Information:**

4 POLE, F2 ASSY, DP  
 LRA: 20.4/10.2  
 NO. OF MOTOR LEADS: 9  
 CONDUIT BOX VOLUME (IN<sup>3</sup>): 30.2  
 CONDUIT BOX MTL: STAMPED STEEL  
 GREASE TYPE: SHELL ALVANIA R3 LITHIUM GREASE  
 USABLE AT 200V @ 1 HP, 3.1 AMPS @ 1.0 SF  
 50 HZ DATA : 3/4 HP, 200/400V, 2.6 /1.3 AMPS @ 1.0 SF, 1450 RPM  
 SOUND POWER: 50.96  
 DMK, 06/04, DATA UPDATE 11/2004  
 INVERTER DUTY PER NEMA MG1 PART 31  
 FOR VARIABLE TORQUE LOADS

**Performance Characteristics**

1st Winding 1st Connection

**Design: 14AD1003A**

Marks:

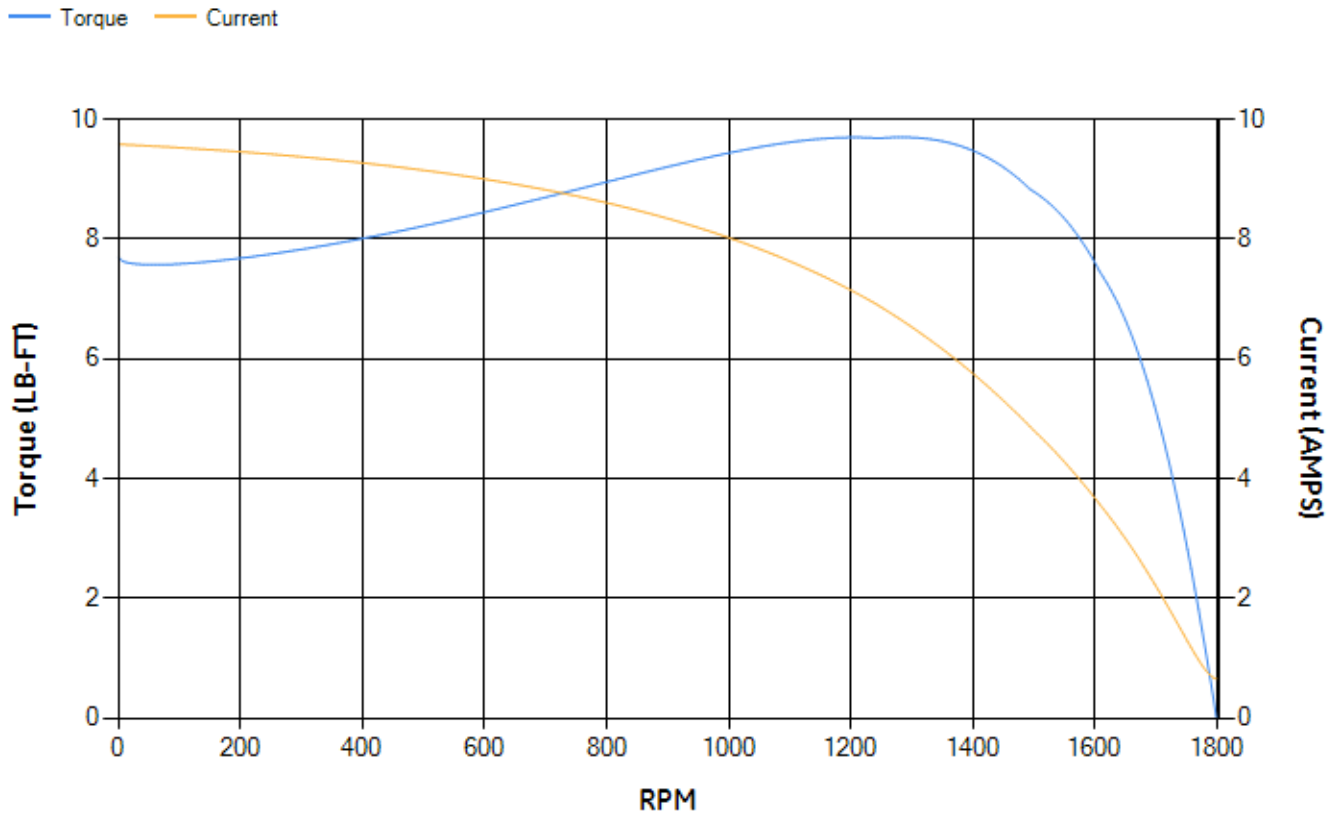
LOAD %	125.0	115.0	100.0	75.0	50.0	25.0	0.0
% EFF	86.48	87	87.81	87.95	86.7	80.31	0.00
% PF	82.44	81.36	79.1	72.78	61.04	39.99	7.73
AMPS	1.64	1.52	1.35	1.1	0.88	0.73	0.65

TORQ(FL)#FT	3.01	TORQ(LR)%FL	255.49	TORQ(BD)%FL	317.27
AMPS(LR)	9.58	PF AT START	0.53		

This motor is capable of two cold or one hot start with a maximum connected load inertia of 64 Lb-Ft Sq (2.69 Kg-meter Sq)at 100% voltage, where the load torque varies with the square of the speed. Acceleration time with maximum inertia and the above load type is 49 seconds. Safe stall time at 100% voltage is 117 seconds cold, 93 seconds hot. Rotor inertia is 0.1 Lb-Ft Sq (0 Kg-meter Sq).

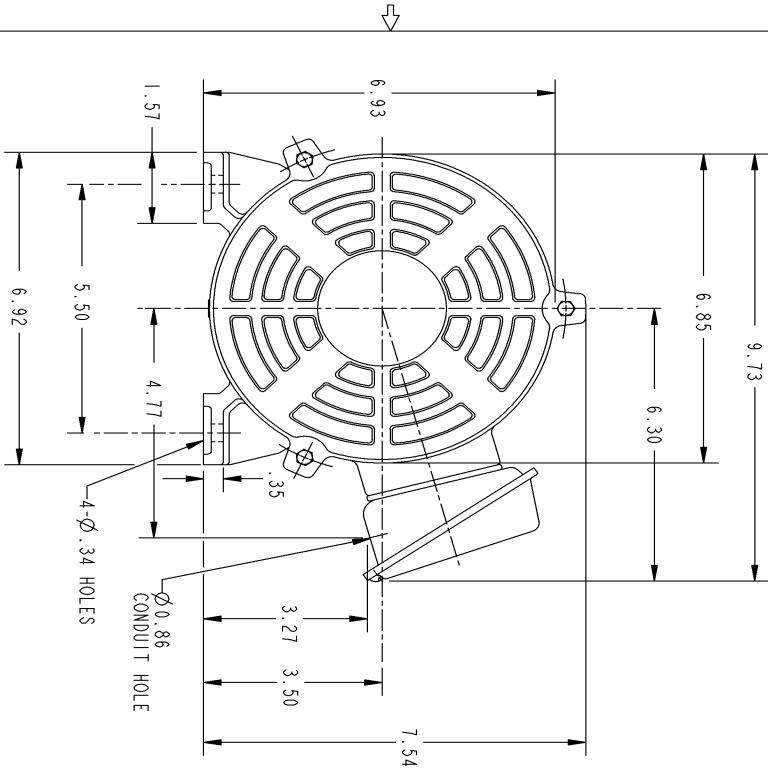
Open Circuit A-C:	0.156	Short Circuit D-C:	0.007
Short Circuit A-C:	0.008	X/R Ratio:	2.723
Stator Slots:	36	Rotor Slots:	28

**Speed Torque Current Curve (First Connection, First Speed)**



NAME:501452442 OBJECT:358B6213AA DATE:23-May-07 23:02:23

Marks:

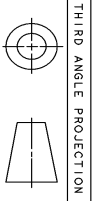
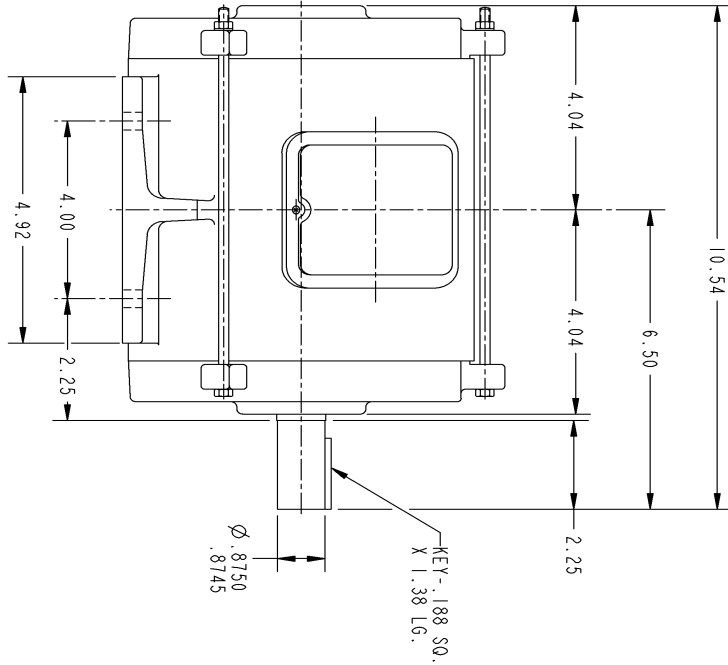


NOTES :

1. CONDUIT BOX MAY BE PLACED WITH THE ENTRANCE DOWN, UP OR ON EITHER SIDE.
2. F-1 ASM AS SHOWN.
3. F-2 ASM - HAS CONDUIT BOX ON OPPOSITE SIDE.

THIS DRAWING IS THE PROPERTY OF GENERAL ELECTRIC COMPANY (GEC) AND CONTAINS PROPRIETARY INFORMATION. IT IS TO BE KEPT IN CONFIDENCE AND NOT TO BE REPRODUCED OR TRANSMITTED IN ANY FORM OR BY ANY MEANS, ELECTRONIC OR MECHANICAL, INCLUDING PHOTOCOPYING, RECORDING, OR BY ANY INFORMATION STORAGE AND RETRIEVAL SYSTEM. THIS DRAWING SHALL BE RETURNED TO GEC UPON THE COMPLETION OF THE PROJECT OR AS SOON THEREAFTER AS PRACTICABLE. ANY UNAUTHORIZED REPRODUCTION OR USE OF THIS DRAWING IS STRICTLY PROHIBITED.

REV.	DESCRIPTION	DATE	APPROVED
1	Updated dimensions	9/20/06	
2	ISAAC 07-0770	05/02/07	R. KOHNE



THIRD ANGLE PROJECTION

UNLESS OTHERWISE SPECIFIED:		SIGNATURES		DATE	
DIMENSIONS ARE IN INCHES		DRAWN P. RAJU		03/28/03	
TOLERANCE ON:		CHECKED PRABHAKAR		03/27/03	
2 PL. DECIMALS ± .01		ENGRG			
3 PL. DECIMALS ± .005		ISSUED PRABHAKAR		03/27/03	
MATERIAL:		APPLIED PRACTICES		SCALE: DRAWING SCALE	
		SIZE DRAWING		REV.	
		B		2	
		358B6213AA			
		143T - OPEN DRIP PROOF			
		OUTLINE			
		GENERAL ELECTRIC COMPANY			
		Fort Wayne, Indiana			
		GE Industrial Systems			

DISTRIBUTION:

SHEET 1 OF 1

Marks:

**Connection Diagram**  
**GEM2034E-FIG3**

