

Product Information Packet

November 8, 2016

Data shown is for the current revision model #. Ensure your nameplate model # matches.

Model Number:	5KS449SAA408D4
Catalog Number:	M9785
Instruction Manual:	GEI-56128
Connection Diagram:	GEM2034E-FIG7
Outline Drawing:	239C6800AA

Accessory Connection Diagrams			
Bearing Thermocouple:	None	Heater:	None
RTD:	None	Thermistor:	None
Thermostat:	None	Winding Thermocouple:	None
Bearing RTD:	None		

Table of Contents

Specification	01
Performance Characteristics	02
Outline Drawing	03
Connection Drawing(s)	04
Spare parts	05



Marks:

MODEL NUMBER:	5KS449SAA408D4	Estimated Weight:	2660 Lbs
Outline Drawing:	239C6800AA	Time Rating:	CONT
Connection Diagram:	GEM2034E-FIG7	Enclosure:	TEFC
Instruction Book:	GEI-56128	Encl Construction:	X\$D
Design Code:	49BD4025A	Ambient Max(°C):	40
Type:	KS	Alt Ambient Max(°C):	50
Frame:	449T	Insulation Class:	H
Phases:	3	NEMA Design:	B
Poles:	8	Nominal Efficiency:	94.5 %
Output Power:	150HP 111KW	Guaranteed Efficiency:	94.1
RPM:	890	3/4 Load Efficiency:	95.3
Voltage:	460	KVA Code:	G
Hertz:	60	Max KVAR:	53.1
Amps - FL:	187.0	Power Factor:	79.5
Service Factor:	1.15	Bearing - DE:	6318ZC3
Alt Service Factor:	1.00	Bearing - ODE:	6318ZC3

Enclosure is Totally Enclosed Fan-Cooled

Stamped Nameplate Notes:

STAMP NP249A5564P051 AS BELOW:
 MODEL:5KS449SAA408D4 S/N: XXX
 CSA CERTIFIED CSA09.2216219 FOR EX NA IIC 200 C GC
 CL 1 ZONE2 AEX NA IIC 200C;CL 1 DIV2 GRP ABCD 200C
 IN -40C <= AMB <= 40C, 1.0 SF ON SINE-WAVE PWR
 SURF TEMP 280C AT 1.15SF ON SINE-WAVE PWR
 OR 200C VT OR 215C CT OR 200C CHP PWM CONTROL
 ALTERNATE RATING FOR PWM CONTROL 1.0SF 40C AMB
 VT 0 - 60 HZ, CT 45-60 HZ, CHP 60-90 HZ.

Additional Information:

8P - T EXTN
 700 CU IN - 3.00" NPT
 OIL RESISTANT SLEEVING ON LEADS
 F1 MOUNTING

Performance Characteristics

1st Winding 1st Connection

Design: 49BD4025A

Marks:

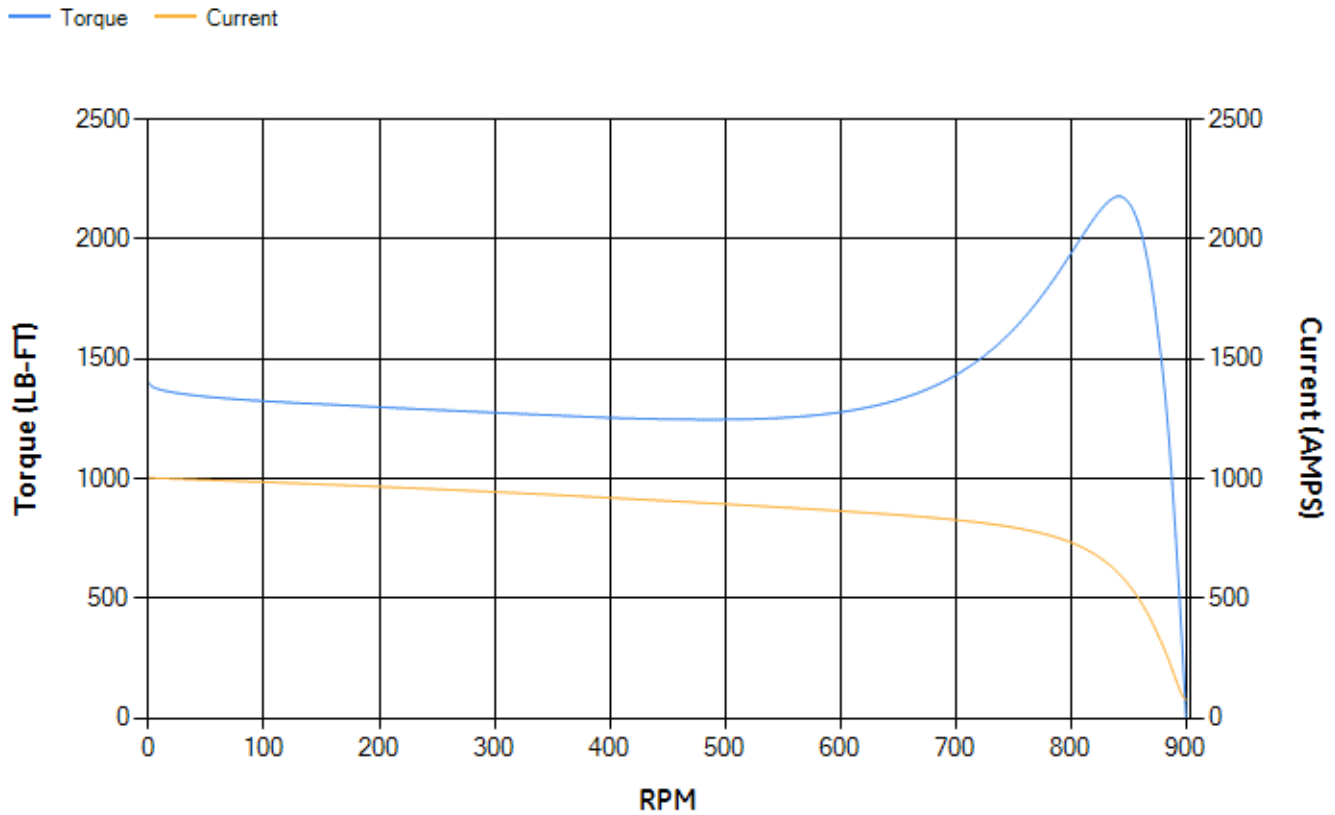
LOAD %	125.0	115.0	100.0	75.0	50.0	25.0	0.0
% EFF	94.08	94.42	95.05	95.3	95.2	93.19	0.00
% PF	80.97	80.71	79.71	75.62	65.86	43.82	2.84
AMPS	230.39	211.85	185.31	146.11	111.96	85.94	74.01

TORQ(FL)#FT	887.22	TORQ(LR)%FL	157.76	TORQ(BD)%FL	245.16
AMPS(LR)	1002.71	PF AT START	0.33		

This motor is capable of two cold or one hot start with a maximum connected load inertia of 17458 Lb-Ft Sq (734.98 Kg-meter Sq)at 100% voltage, where the load torque varies with the square of the speed. Acceleration time with maximum inertia and the above load type is 46 seconds. Safe stall time at 100% voltage is 113 seconds cold, 56 seconds hot. Rotor inertia is 138.53 Lb-Ft Sq (5.83 Kg-meter Sq).

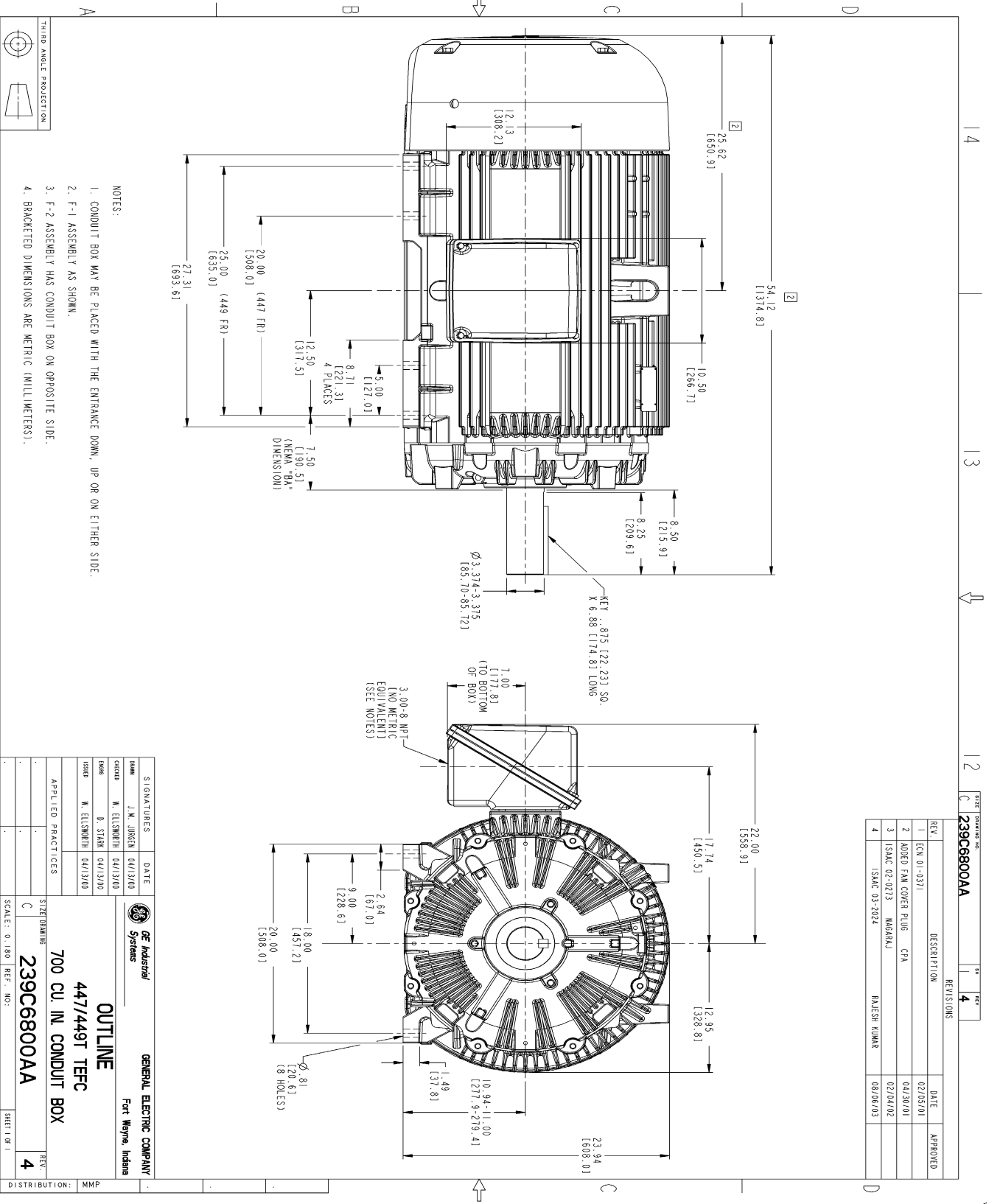
Open Circuit A-C:	0.467	Short Circuit D-C:	0.031
Short Circuit A-C:	0.031	X/R Ratio:	11.647
Stator Slots:	72	Rotor Slots:	58

Speed Torque Current Curve (First Connection, First Speed)



NAME: 103016807 OBJECT: 239C6800AA DATE: 08-Aug-03 12:01:27

Marks:



- NOTES:
1. CONDUIT BOX MAY BE PLACED WITH THE ENTRANCE DOWN, UP OR ON EITHER SIDE.
 2. F-1 ASSEMBLY AS SHOWN.
 3. F-2 ASSEMBLY HAS CONDUIT BOX ON OPPOSITE SIDE.
 4. BRACKETED DIMENSIONS ARE METRIC (MILLIMETERS).

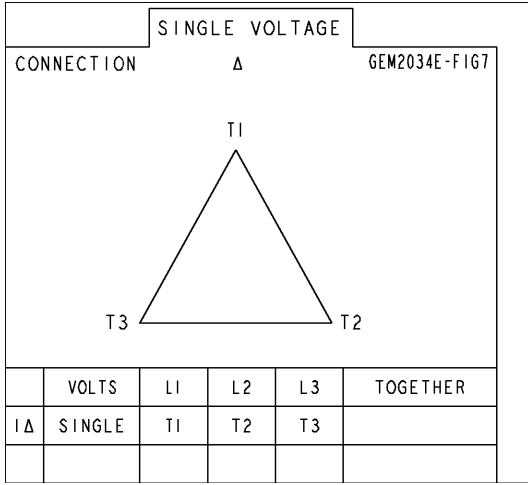
REV.	DESCRIPTION	DATE	APPROVED
1	ECN 01-0371	02/05/01	
2	CODED FAN COVER PLUG CFA	04/30/01	
3	ISAC 02-0213 MARGAJ	02/04/02	
4	ISAC 03-2024 RAJESH KUMAR	08/06/03	

SIGNATURES	DATE
DAVE J.M. JOHNSON 04/13/00	
checked W. ELLSWORTH 04/13/00	
DRG D. STARR 04/13/00	
ISSUED W. ELLSWORTH 04/13/00	

		GENERAL ELECTRIC COMPANY Fort Wayne, Indiana
OUTLINE 447/449T TEFC 700 CU. IN. CONDUIT BOX		
SCALE: 0.180	REF. NO.:	
SIZE DRAWING: 239C6800AA		SHEET OF 1 REV: 4
DISTRIBUTION: MMP		

Marks:

Connection Diagram
GEM2034E-FIG7



End shield Assembly		
Part Description	DE Side Part#	ODE Side Part#
End Shield	115E4355AA1	115E4355LM1
Bearing	235A2514AG01	235A2514AG01
Slinger/Inproseal	149C4399G07	149C4399G07

Fan & Fan Cover Assembly	
Part Description	Part#
Fan	159C7100G03
Fan Cover	128D6841AA1

Conduit & Accessories Box Assembly	
Part Description	Part#
Conduit Box	118D4408AD2

Mechanical Accessories	
Part Description	Part#
Brake	
Tachometer	