

Product Information Packet

November 8, 2016

Data shown is for the current revision model #. Ensure your nameplate model # matches.

Model Number:	5KS145STE204A
Catalog Number:	M7524
Instruction Manual:	GEI-M1031
Connection Diagram:	GEM2034E-FIG1
Outline Drawing:	358B6269AB

Accessory Connection Diagrams			
Bearing Thermocouple:	None	Heater:	None
RTD:	None	Thermistor:	None
Thermostat:	None	Winding Thermocouple:	None
Bearing RTD:	None		

Table of Contents	
Specification	01
Performance Characteristics	02
Outline Drawing	03
Connection Drawing(s)	04

Marks:

MODEL NUMBER:	5KS145STE204A	Estimated Weight:	60 Lbs
Outline Drawing:	358B6269AB	Time Rating:	CONT
Connection Diagram:	GEM2034E-FIG1	Enclosure:	TEFC
Instruction Book:	GEI-M1031	Encl Construction:	SD
Design Code:	14AD1012B	Ambient Max(°C):	40
Type:	KS	Alt Ambient Max(°C):	--
Frame:	145T	Insulation Class:	F
Phases:	3	NEMA Design:	B
Poles:	4	Nominal Efficiency:	86.5 %
Output Power:	1.5HP 1.1KW	Guaranteed Efficiency:	84.0
RPM:	1745	3/4 Load Efficiency:	88.6
Voltage:	575	KVA Code:	M
Hertz:	60	Max KVAR:	0.8
Amps - FL:	1.7	Power Factor:	77.0
Service Factor:	1.15	Bearing - DE:	6205ZZC3
Alt Service Factor:	--	Bearing - ODE:	6205ZZC3

Enclosure is Totally Enclosed Fan-Cooled

Stamped Nameplate Notes:**Additional Information:**

4 POLE, TEFC, LRA: 13.4 AMPS
 SOUND POWER : 70 DBA
 GREASE: SHELL ALVANIA R3 LITHIUM GREASE
 NO. OF MOTOR LEADS: 3
 CONDUIT BOX VOLUME (CU IN): 47.1
 CONDUIT BOX MATERIAL: CAST IRON
 SUITABLE FOR USE IN CLASS I DIVISION 2 LOCATIONS
 CLASS I DIVISION 2 GROUPS A,B,C,D T3C
 CLASS I ZONE 2 IIC T3C

Performance Characteristics

1st Winding 1st Connection

Design: 14AD1012B

Marks:

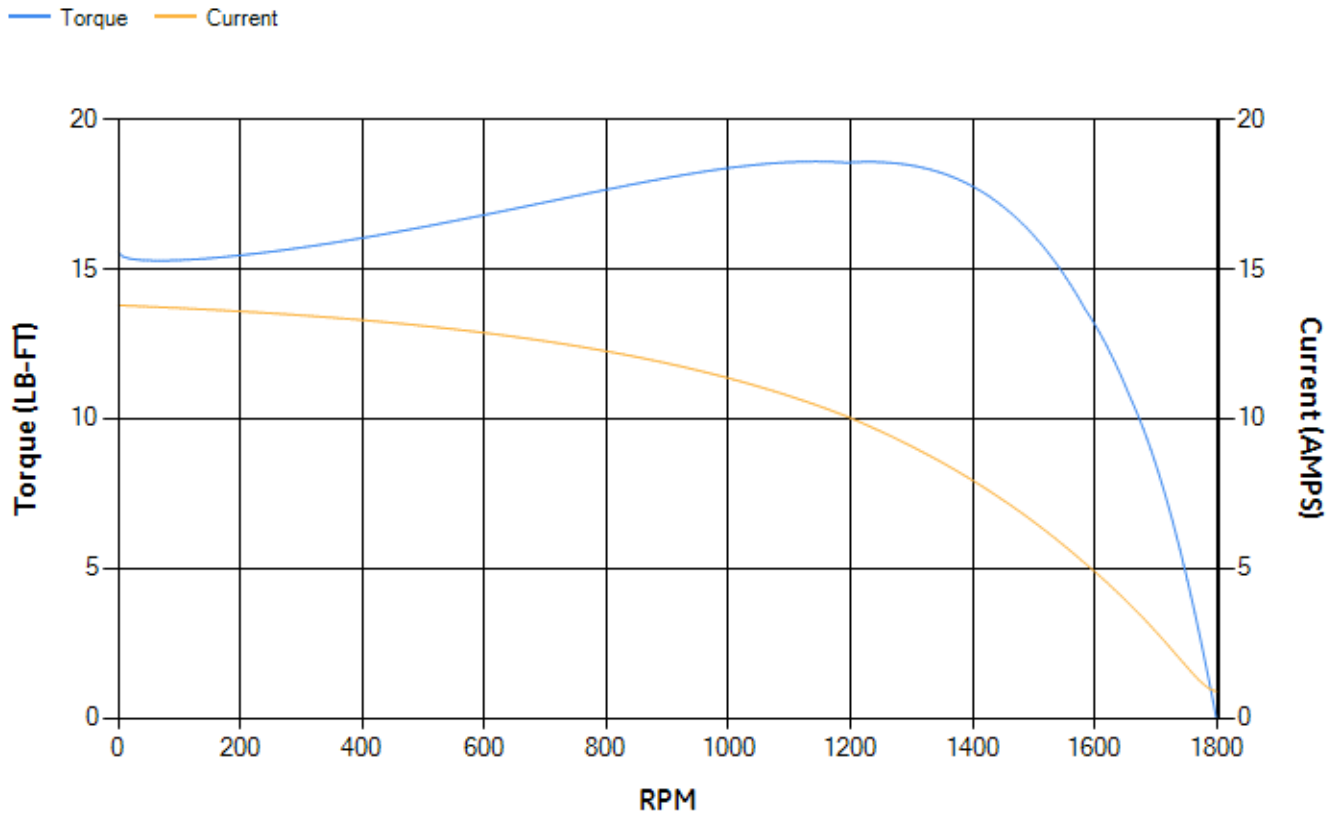
LOAD %	125.0	115.0	100.0	75.0	50.0	25.0	0.0
% EFF	87.77	88.16	88.77	88.63	87.13	80.51	0.00
% PF	80.43	79.04	76.25	68.96	56.39	35.78	6.74
AMPS	1.99	1.85	1.66	1.38	1.14	0.97	0.89

TORQ(FL)#FT	4.51	TORQ(LR)%FL	345.1	TORQ(BD)%FL	405.28
AMPS(LR)	13.78	PF AT START	0.55		

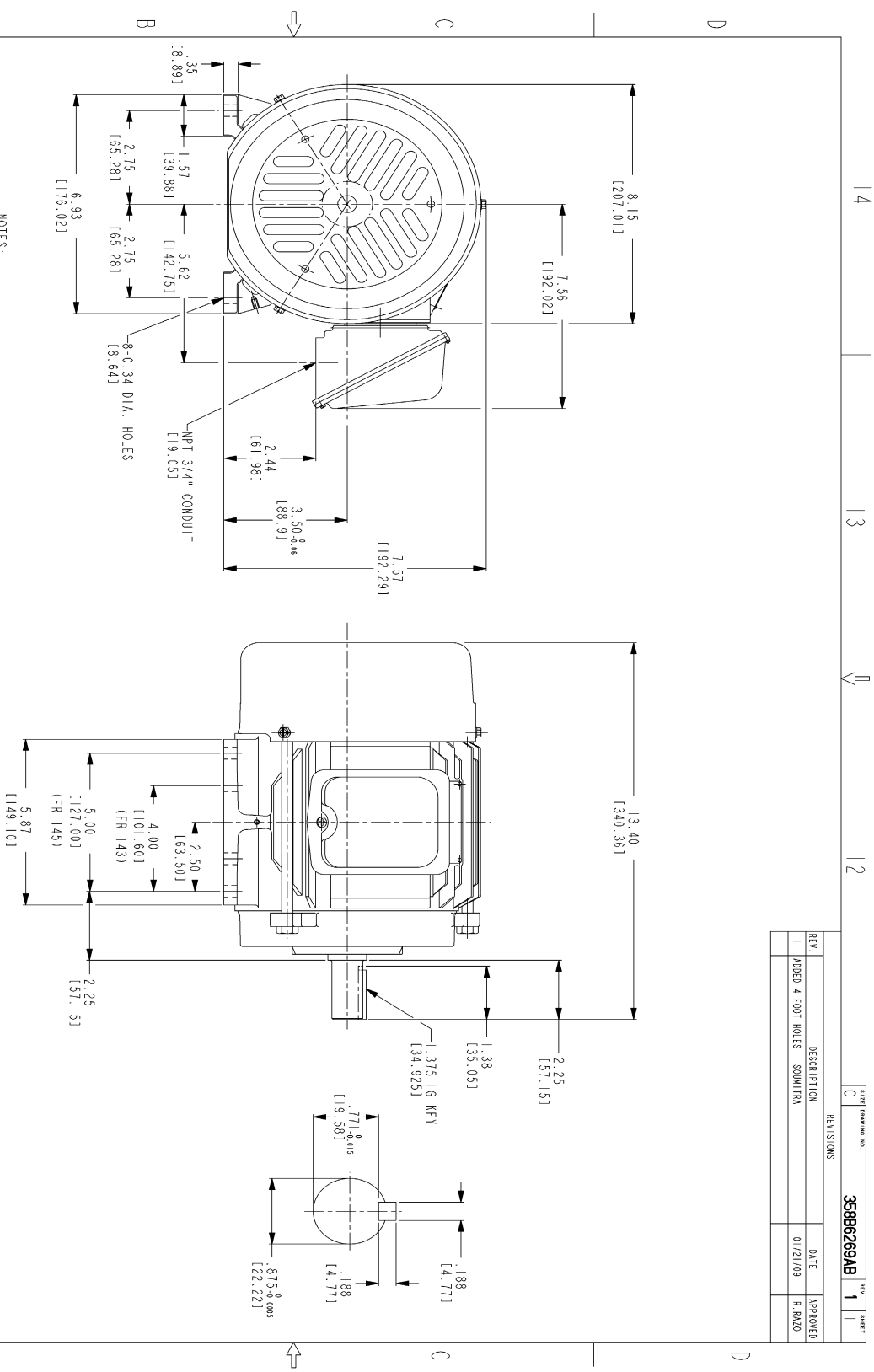
This motor is capable of two cold or one hot start with a maximum connected load inertia of 84 Lb-Ft Sq (3.54 Kg-meter Sq)at 100% voltage, where the load torque varies with the square of the speed. Acceleration time with maximum inertia and the above load type is 33 seconds. Safe stall time at 100% voltage is 78 seconds cold, 60 seconds hot. Rotor inertia is 0.11 Lb-Ft Sq (0 Kg-meter Sq).

Open Circuit A-C:	0.144	Short Circuit D-C:	0.007
Short Circuit A-C:	0.007	X/R Ratio:	2.731
Stator Slots:	36	Rotor Slots:	28

Speed Torque Current Curve (First Connection, First Speed)

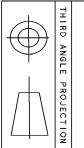


Marks:



- NOTES:
1. DIMENSIONS ARE IN INCHES.
 2. F-1 ASM AS SHOWN.
 3. F-2 ASM - HAS CONDUIT BOX ON OPPOSITE SIDE.
 4. BRACKETED DIMENSIONS ARE METRIC (MILLIMETERS)
 5. ICA11, IP94, IMB34 APPLY.

REV.	DESCRIPTION	DATE	APPROVED
1	ADDED 4 FOOT HOLES	01/21/09	R. PALO



Part must conform to SI 900000
Sect 4, Toxicity Procedure

FOR ADDITIONAL INFO REFER TO:	SIGNATURES	DATE
DESIGN	SOUMITRA	12/26/07
ENGINEERING	SAKUNT	12/26/07
COLL. ENGRS.	R. KOHLE	12/26/07
MANUFACTURING	SOUMITRA	12/26/07
INSPECTION		

GE Consumer & Industrial

GENERAL ELECTRIC COMPANY

OUTLINE

FTD - #37/AST TERC CE MARK
471 CU IN CONDUIT BOX

358B6269AB

SCALE: DRAWING SCALE

SHEET 1 OF 1

Marks:

Connection Diagram
GEM2034E-FIG1

