

# Product Information Packet

January 13, 2017

Data shown is for the current revision model #. Ensure your nameplate model # matches.

<b>Model Number:</b>	<b>5KS215DAE5031B</b>
<b>Catalog Number:</b>	<b>V4204</b>
<b>Instruction Manual:</b>	GEK-95353
<b>Connection Diagram:</b>	GEM2034E-FIG3
<b>Outline Drawing:</b>	4002B5821NMP5210

Accessory Connection Diagrams			
<b>Bearing Thermocouple:</b>	None	<b>Heater:</b>	3027JE-1C
<b>RTD:</b>	None	<b>Thermistor:</b>	None
<b>Thermostat:</b>	None	<b>Winding Thermocouple:</b>	None
<b>Bearing RTD:</b>	None		

## Table of Contents

Specification	01
Performance Characteristics	02
Outline Drawing	03
Connection Drawing(s)	04
Spare parts	05



**Marks:**

<b>MODEL NUMBER:</b>	<b>5KS215DAE5031B</b>	<b>Estimated Weight:</b>	206 Lbs
<b>Outline Drawing:</b>	4002B5821NMP5210	<b>Time Rating:</b>	CONT
<b>Connection Diagram:</b>	GEM2034E-FIG3	<b>Enclosure:</b>	WPI
<b>Instruction Book:</b>	GEK-95353	<b>Encl Construction:</b>	OPEN
<b>Design Code:</b>	21BD0095A	<b>Ambient Max(°C):</b>	40
<b>Type:</b>	KS	<b>Alt Ambient Max(°C):</b>	--
<b>Frame:</b>	L215TP10	<b>Insulation Class:</b>	H
<b>Phases:</b>	3	<b>NEMA Design:</b>	B
<b>Poles:</b>	2	<b>Nominal Efficiency:</b>	90.2 %
<b>Output Power:</b>	15HP 11.1KW	<b>Guaranteed Efficiency:</b>	88.5
<b>RPM:</b>	3510	<b>3/4 Load Efficiency:</b>	91.7
<b>Voltage:</b>	230/460	<b>KVA Code:</b>	G
<b>Hertz:</b>	60	<b>Max KVAR:</b>	2.7
<b>Amps - FL:</b>	34.4/17.2	<b>Power Factor:</b>	90.5
<b>Service Factor:</b>	1.15	<b>Bearing - DE:</b>	7308
<b>Alt Service Factor:</b>	--	<b>Bearing - ODE:</b>	6208-2ZC3

**Enclosure is Weather Protected One**

**Stamped Nameplate Notes:**

PREMIUM EFFICIENT MOTOR  
 NEMA ENCL WPI AND CSA ENCL DP  
 ROT CCW FACING ODE LEAD/PH SEQUENCE 1-2-3/1-2-3  
 HTR LDS HE1-HE2 115V 60W  
 INVERTER DUTY PER NEMA MG1 PART 31  
 ALTERNATE RATING FOR PWM CONTROL:  
 1.0 SF VAR TORQUE RANGE 10-60 HZ  
 SUITABLE FOR 10HP, 190/380V,  
 50 HZ WITH 28/14AMPS AND 2930 RPM AT 1.0 SF

**Additional Information:**

2P - TP EXTN  
 C/BOX 55 CU IN-1.00 NPT  
 AUX LEADS EXIT WITH MOTOR LEADS  
 RCF 5000 CPM, STATIC DEFLECTION .0014 INCHES &  
 CENTER OF GRAVITY 8.59 INCHES  
 HOLLOW SHAFT HIGH THRUST  
 OIL RESISTANT SLEEVING ON LEADS  
 BEARING LIFE 6252 HOURS AT 1850 LB THRUST  
 BEARING LIFE 8760 HOURS AT 1650 LB THRUST  
 BALL TYPE COUPLING  
 COUPLING WILL BE ORDERED SEPARATELY  
 DP STOCK 10/21/2016  
 ENGINEERED BY: BALASUBRAMANIANH/BILURP



**Performance Characteristics**

1st Winding 1st Connection

**Design: 21BD0095A**

**Marks:**

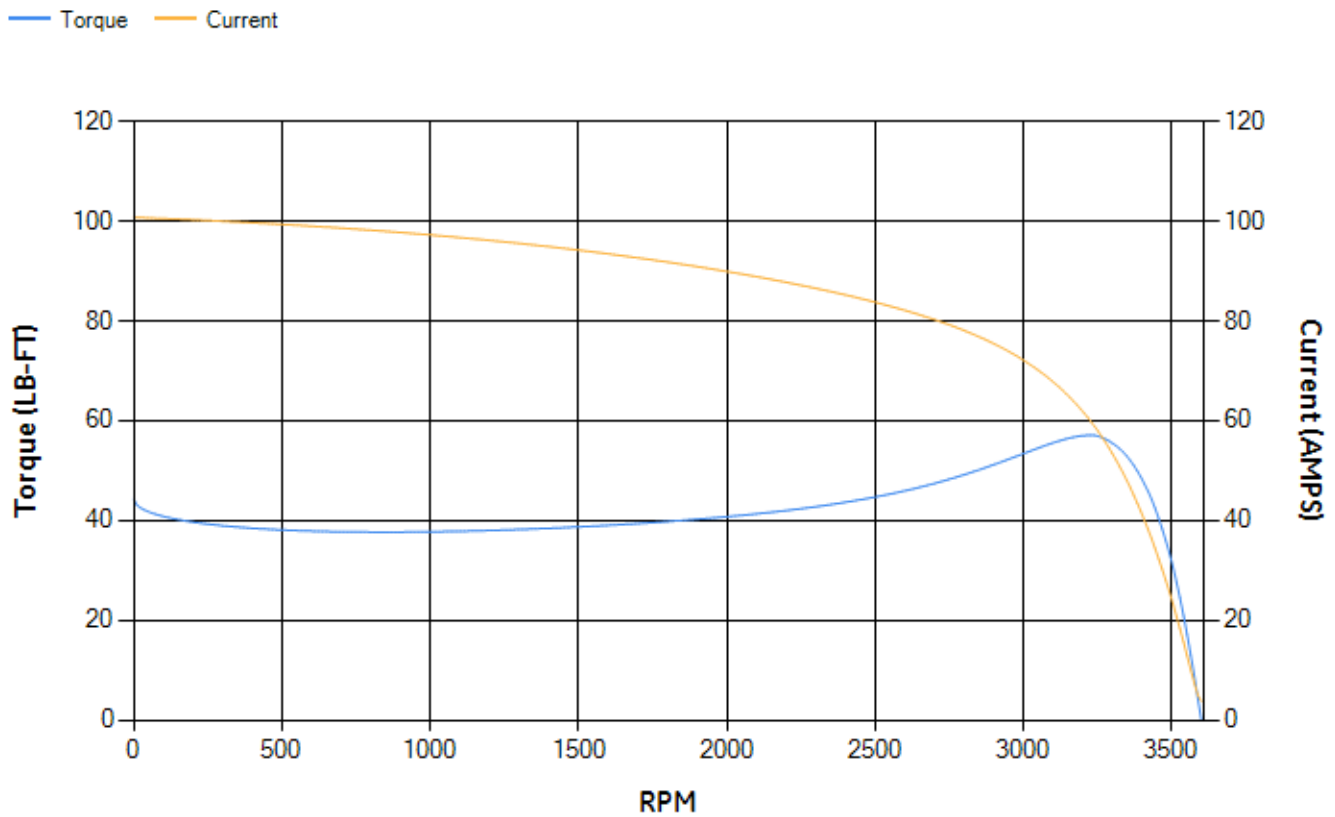
LOAD %	125.0	115.0	100.0	75.0	50.0	25.0	0.0
% EFF	88.14	89.04	90.4	91.67	92.29	90.35	0.00
% PF	89.94	90.32	90.52	89.6	85.39	69.49	7.64
AMPS	22.14	20.08	17.13	12.82	8.91	5.59	3.76

TORQ(FL)#FT	22.42	TORQ(LR)%FL	197.72	TORQ(BD)%FL	252.42
AMPS(LR)	100.75	PF AT START	0.38		

This motor is capable of two cold or one hot start with a maximum connected load inertia of 86 Lb-Ft Sq (3.62 Kg-meter Sq) at 100% voltage, where the load torque varies with the square of the speed. Acceleration time with maximum inertia and the above load type is 28 seconds. Safe stall time at 100% voltage is 51 seconds cold, 34 seconds hot. Rotor inertia is 0.47 Lb-Ft Sq (0.02 Kg-meter Sq).

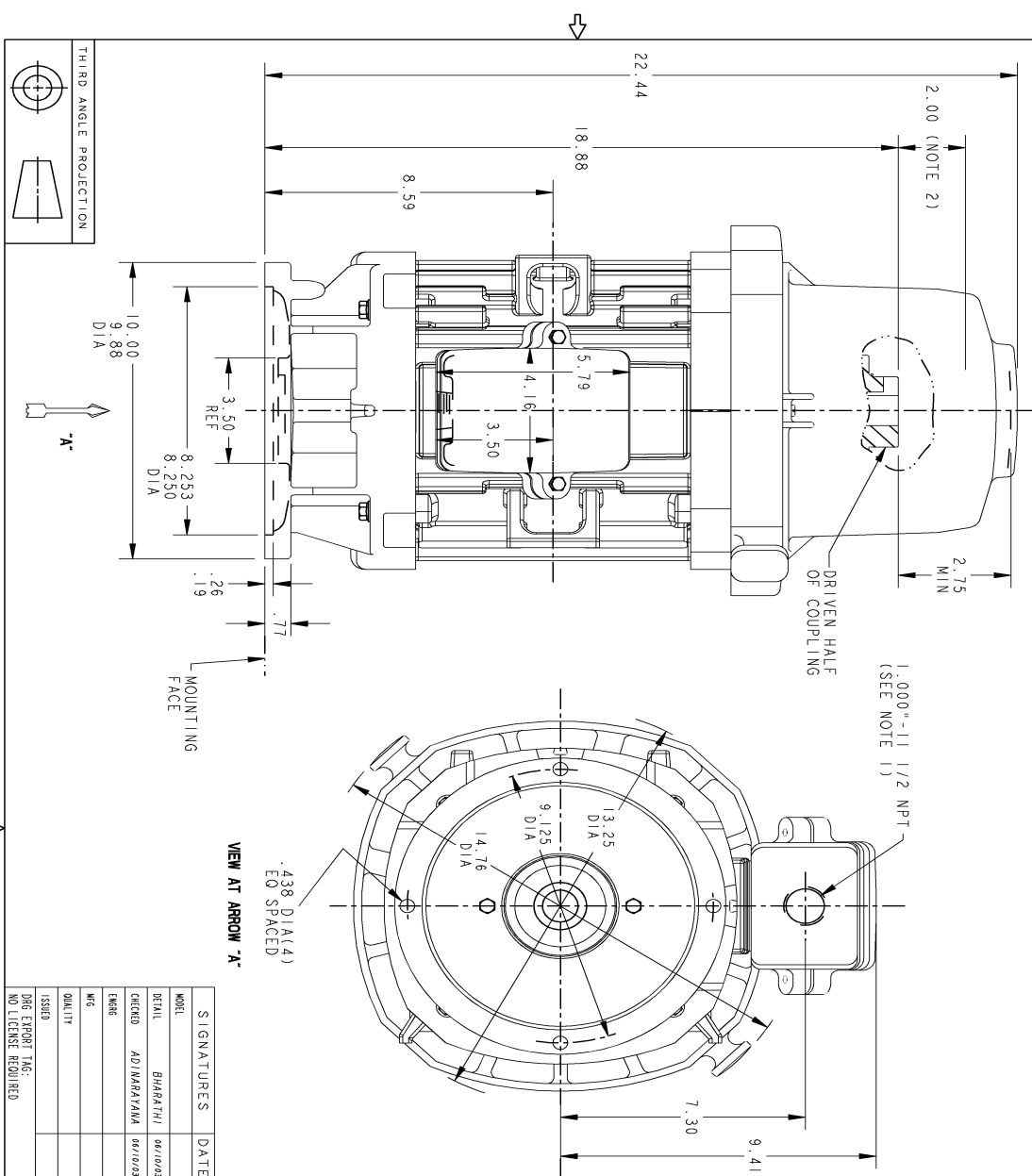
Open Circuit A-C:	0.519	Short Circuit D-C:	0.01
Short Circuit A-C:	0.017	X/R Ratio:	3.803
Stator Slots:	36	Rotor Slots:	26

**Speed Torque Current Curve (First Connection, First Speed)**



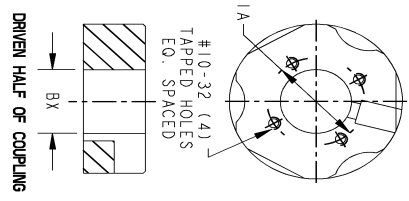
Marks:

NOTE 1: CONDUIT BOX MAY BE ASSEMBLED WITH ENTRANCE UP, DOWN, OR TO EITHER SIDE.  
 NOTE 2: THE TOTAL HEIGHT OF PUMP SHAFT & LOCKING NUT ABOVE TOP OF COUPLING, MUST NOT EXCEED THIS DIMENSION.



REV.	DESCRIPTION	DATE	APPROVED
1	ISAAC NO: #09-0117 PRADEEP	02/12/09	RAJU
2	ISAAC NO: #16-1067 NAGARAJ	12/28/16	RAVI

BORE DIA.	"B X"	"W"	"D"
1.002	1.001	.250	.125
.939	.938	.188	.094
.877	.876	.250	.125
.752	.751	.188	.094
1.002	1.001	.250	.125
.939	.938	.188	.094
.877	.876	.250	.125
.752	.751	.188	.094



**GE POWER CONVERSION**

INDUCTION MOTOR OUTLINE  
 HOLLOW SHAFT - HIGH THRUST

4002B5821NMP5210 002

SIGNATURES	DATE
MODEL: BHARATHI	08/10/03
DESIGNED: ADINAKAYAMA	08/10/03
ENGR:	
QUALITY:	
ISSUED:	
DATE EXPORT TAG:	
NO LICENSE REQUIRED	

SCALE: .3

DRG THE MECHANICAL DESIGN

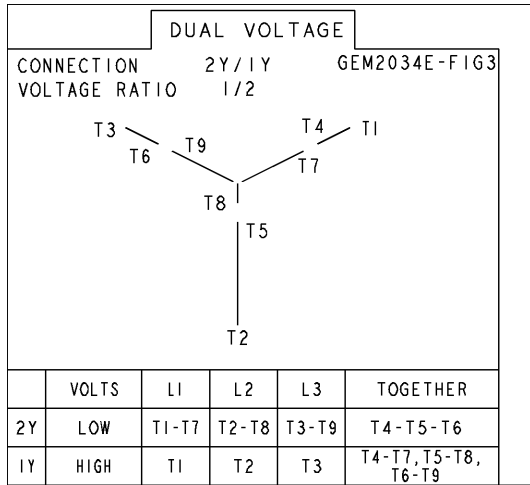
SOLID MODEL: MODEL NAME

SIZE DRAWING NO. 4002B5821NMP5210 002

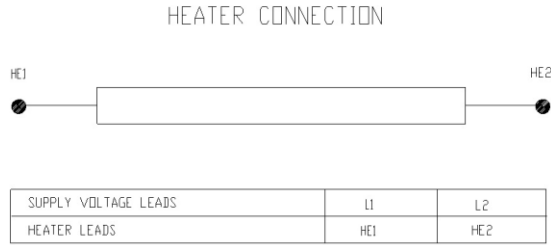
REV SHEET 1

Marks:

**Connection Diagram**  
**GEM2034E-FIG3**



**Heater Connection**  
**3027JE-1C**



End shield Assembly		
Part Description	DE Side Part#	ODE Side Part#
End Shield	128D6024PA1	128D6025PA1
Bearing	235A2503EJ01	235A2503AA01
Slinger/Inproseal	235A2300FL1	

Fan & Fan Cover Assembly	
Part Description	Part#
Fan	
Fan Cover	

Conduit & Accessories Box Assembly	
Part Description	Part#
Conduit Box	4002B5721PA-G01

Mechanical Accessories	
Part Description	Part#
Brake	
Tachometer	