

Product Information Packet

November 7, 2016

Data shown is for the current revision model #. Ensure your nameplate model # matches.

Model Number:	5KS182ATE305A
Catalog Number:	E7707
Instruction Manual:	GEI-M1023
Connection Diagram:	GEM2034E-FIG3
Outline Drawing:	358B6214AA

Accessory Connection Diagrams			
Bearing Thermocouple:	None	Heater:	None
RTD:	None	Thermistor:	None
Thermostat:	None	Winding Thermocouple:	None
Bearing RTD:	None		

Table of Contents	
Specification	01
Performance Characteristics	02
Outline Drawing	03
Connection Drawing(s)	04

Marks:

MODEL NUMBER:	5KS182ATE305A	Estimated Weight:	95 Lbs
Outline Drawing:	358B6214AA	Time Rating:	CONT
Connection Diagram:	GEM2034E-FIG3	Enclosure:	DP
Instruction Book:	GEI-M1023	Encl Construction:	OPEN
Design Code:	18AD3006A	Ambient Max(°C):	40
Type:	KS	Alt Ambient Max(°C):	--
Frame:	182T	Insulation Class:	F
Phases:	3	NEMA Design:	A
Poles:	6	Nominal Efficiency:	86.5 %
Output Power:	1.5HP 1.1KW	Guaranteed Efficiency:	84.0
RPM:	1175	3/4 Load Efficiency:	87.5
Voltage:	230/460	KVA Code:	N
Hertz:	60	Max KVAR:	1.13
Amps - FL:	5.4/2.7	Power Factor:	60.5
Service Factor:	1.15	Bearing - DE:	6207ZZ
Alt Service Factor:	--	Bearing - ODE:	6206ZZ

Enclosure is Dripproof

Stamped Nameplate Notes:**Additional Information:**

OFFSET STATOR CORE NOT SUITABLE FOR F2 CONVERSION
 6 POLE DP
 LRA: 45.2/22.6
 NO. OF MOTOR LEADS: 9
 CONDUIT BOX VOLUME (IN³): 30.2
 CONDUIT BOX MTL: STAMPED STEEL
 GREASE TYPE: SHELL ALVANIA R3 LITHIUM GREASE
 USABLE AT 200V @ 1.5HP, 5.4 AMPS @ 1.0 SF
 50 HZ DATA: 1.5 HP, 200/400V, 6 / 3 AMPS @ 1.0 SF, 970 RPM
 SOUND POWER: 64.3
 DMK, 06/04, DATA UPDATE 11/2004
 INVERTER DUTY PER NEMA MG1 PART 31
 FOR VARIABLE TORQUE LOADS

Performance Characteristics

1st Winding 1st Connection

Design: 18AD3006A

Marks:

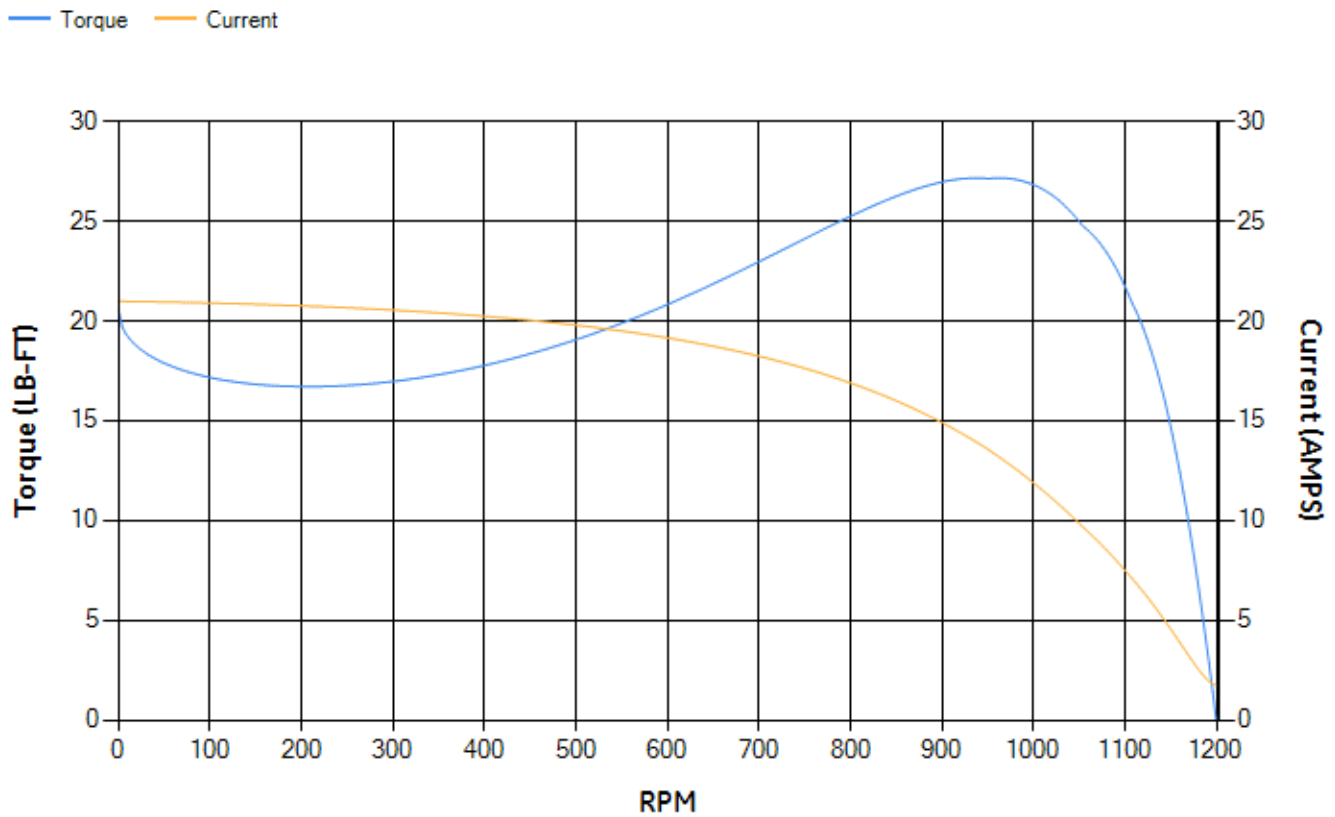
LOAD %	125.0	115.0	100.0	75.0	50.0	25.0	0.0
% EFF	88.25	88.34	88.5	87.49	84.81	76.04	0.00
% PF	68.91	66.7	62.71	53.81	41.43	25.2	5.81
AMPS	2.89	2.74	2.53	2.24	2	1.83	1.74

TORQ(FL)#FT	6.69	TORQ(LR)%FL	307.51	TORQ(BD)%FL	394.81
AMPS(LR)	20.98	PF AT START	0.42		

This motor is capable of two cold or one hot start with a maximum connected load inertia of 307 Lb-Ft Sq (12.92 Kg-meter Sq)at 100% voltage, where the load torque varies with the square of the speed. Acceleration time with maximum inertia and the above load type is 65 seconds. Safe stall time at 100% voltage is 154 seconds cold, 121 seconds hot. Rotor inertia is 0.41 Lb-Ft Sq (0.02 Kg-meter Sq).

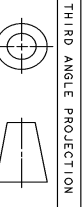
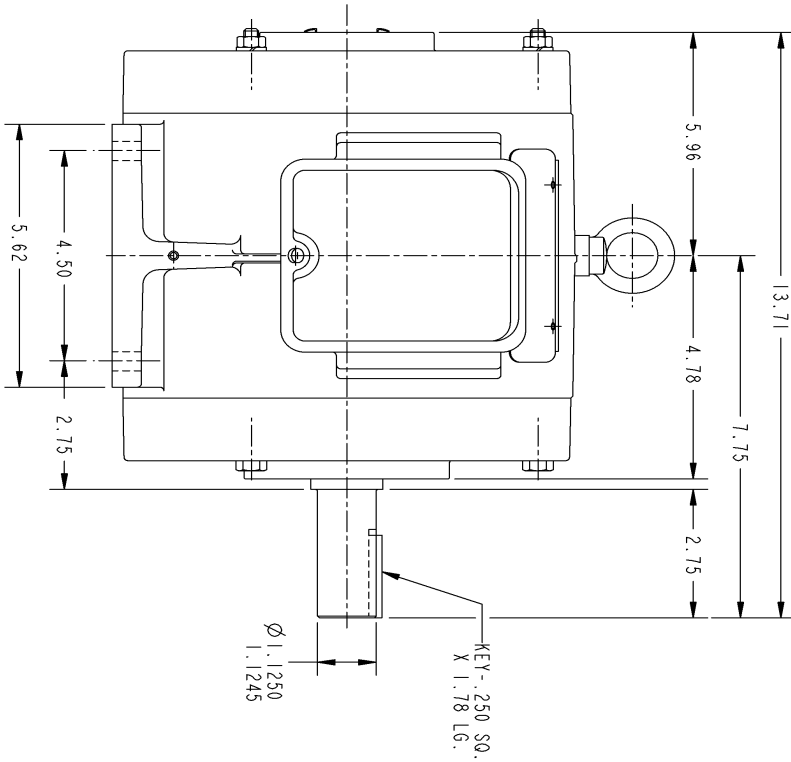
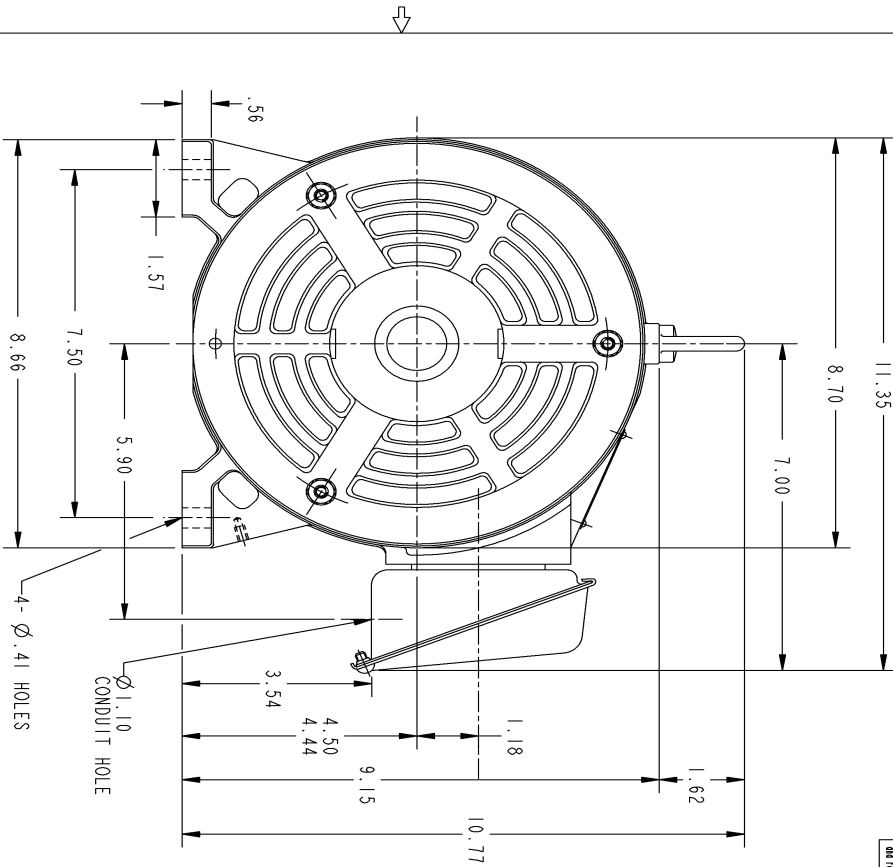
Open Circuit A-C:	0.156	Short Circuit D-C:	0.01
Short Circuit A-C:	0.011	X/R Ratio:	3.798
Stator Slots:	36	Rotor Slots:	46

Speed Torque Current Curve (First Connection, First Speed)



NAME:501452442 OBJECT:358B6214AA DATE:24-May-07 22:58:52

Marks:



THIRD ANGLE PROJECTION

NOTES :

1. CONDUIT BOX MAY BE PLACED WITH THE ENTRANCE DOWN, UP OR ON EITHER SIDE.
2. F-1 ASM AS SHOWN.
3. F-2 ASM - HAS CONDUIT BOX ON OPPOSITE SIDE.

This General is the property of General Electric Company (GEC) and contains confidential information. This General is loaned to the recipient under the understanding that the information contained herein shall be disclosed to no other person and shall be returned to GEC upon completion of the project. This General shall be returned to GEC upon its receipt and shall not be used for any other purpose without the written consent of GEC. This General is subject to control restrictions under U.S. Export Control laws and regulations.

GE PROPRIETARY INNOVATION
358B6214AA

REVISIONS

REV.	DESCRIPTION	DATE	APPROVED
1	ISAAC 07-0770	05/02/07	R. KOHNE

UNLESS OTHERWISE SPECIFIED:		SIGNATURES		DATE	
DIMENSIONS ARE IN INCHES		DRAWN		P. RAJU 03/28/03	
TOLERANCE ON: 2 PL. DECIMALS ± 3 PL. DECIMALS ± ANGLES ± 1°		CHECKED		PRABHAKAR 03/27/03	
MATERIAL:		ISSUED		PRABHAKAR 03/27/03	
APPLIED PRACTICES		SIZE/DRAWING		SCALE: DRAWING SCALE	
		B		358B6214AA	
DISTRIBUTION:		REV. 1		SHEET 1 OF 1	

GE Industrial Systems
GENERAL ELECTRIC COMPANY
 Fort Wayne, Indiana

OUTLINE

182T - OPEN DRIP PROOF

358B6214AA

Marks:

Connection Diagram
GEM2034E-FIG3

