

Product Information Packet

November 9, 2016

Data shown is for the current revision model #. Ensure your nameplate model # matches.

Model Number:	5KS405LAA248A
Catalog Number:	M7694
Instruction Manual:	GEI-56128
Connection Diagram:	GEM2034E-FIG7
Outline Drawing:	239CC400AA

Accessory Connection Diagrams			
Bearing Thermocouple:	None	Heater:	None
RTD:	None	Thermistor:	None
Thermostat:	None	Winding Thermocouple:	None
Bearing RTD:	None		

Table of Contents	
Specification	01
Performance Characteristics	02
Outline Drawing	03
Connection Drawing(s)	04

Marks:

MODEL NUMBER:	5KS405LAA248A	Estimated Weight:	1440 Lbs
Outline Drawing:	239CC400AA	Time Rating:	CONT
Connection Diagram:	GEM2034E-FIG7	Enclosure:	TEFC
Instruction Book:	GEI-56128	Encl Construction:	SD
Design Code:	40BD1084A	Ambient Max(°C):	40
Type:	KS	Alt Ambient Max(°C):	--
Frame:	405T	Insulation Class:	F
Phases:	3	NEMA Design:	B
Poles:	4	Nominal Efficiency:	95.4 %
Output Power:	100HP 74KW	Guaranteed Efficiency:	94.5
RPM:	1785	3/4 Load Efficiency:	95.6
Voltage:	460	KVA Code:	G
Hertz:	60	Max KVAR:	36.4
Amps - FL:	122.0	Power Factor:	80.5
Service Factor:	1.15	Bearing - DE:	NU 316
Alt Service Factor:	--	Bearing - ODE:	6316ZC3S0

Enclosure is Totally Enclosed Fan-Cooled

Stamped Nameplate Notes:

ROLLER BEARING - FOR BELTED LOAD ONLY
 INVERTER DUTY PER NEMA MG1 PART 31
 ALTERNATE RATING FOR PWM CONTROL:
 1.0 SF VAR TORQUE RANGE 0-60 HZ

Additional Information:

4P - T EXTN
 700 CU IN - 3.00" NPT
 OIL RESISTANT SLEEVING ON LEADS
 B5F4C4 HIGH FATIGUE STEEL AISI 4142 SHAFT MATERIAL
 F1 MOUNTING
 VIBRATION LIMIT 0.0016 INCH PEAK TO PEAK

Performance Characteristics

1st Winding 1st Connection

Design: 40BD1084A

Marks:

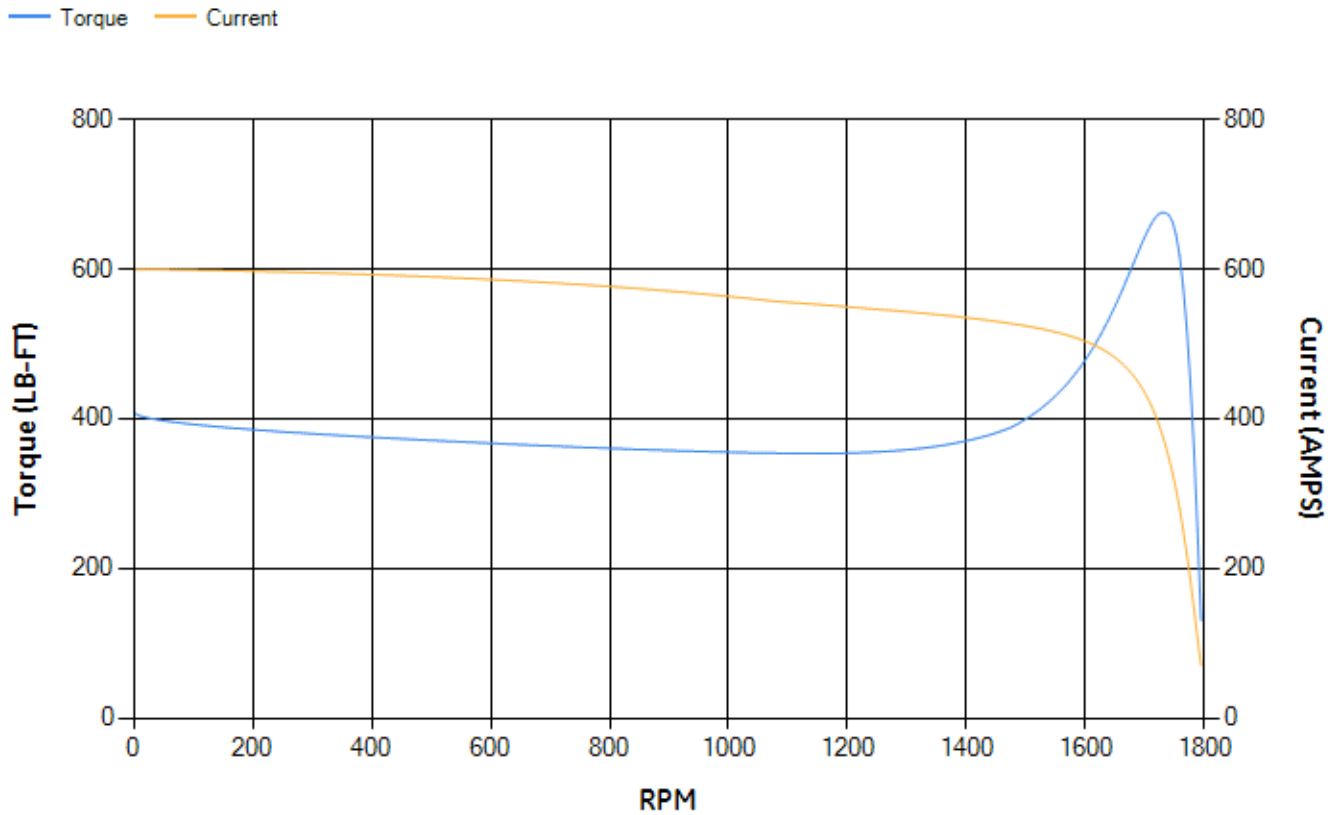
LOAD %	125.0	115.0	100.0	75.0	50.0	25.0	0.0
% EFF	94.86	95.09	95.58	95.63	95.33	93.08	0.00
% PF	82.38	81.91	80.61	76.05	65.78	43.32	2.86
AMPS	149.72	138.19	121.48	96.52	74.63	58.03	50.63

TORQ(FL)#FT	294.36	TORQ(LR)%FL	139.06	TORQ(BD)%FL	229.2
AMPS(LR)	599.81	PF AT START	0.29		

This motor is capable of two cold or one hot start with a maximum connected load inertia of 2082 Lb-Ft Sq (87.65 Kg-meter Sq)at 100% voltage, where the load torque varies with the square of the speed. Acceleration time with maximum inertia and the above load type is 41 seconds. Safe stall time at 100% voltage is 106 seconds cold, 50 seconds hot. Rotor inertia is 21.75 Lb-Ft Sq (0.92 Kg-meter Sq).

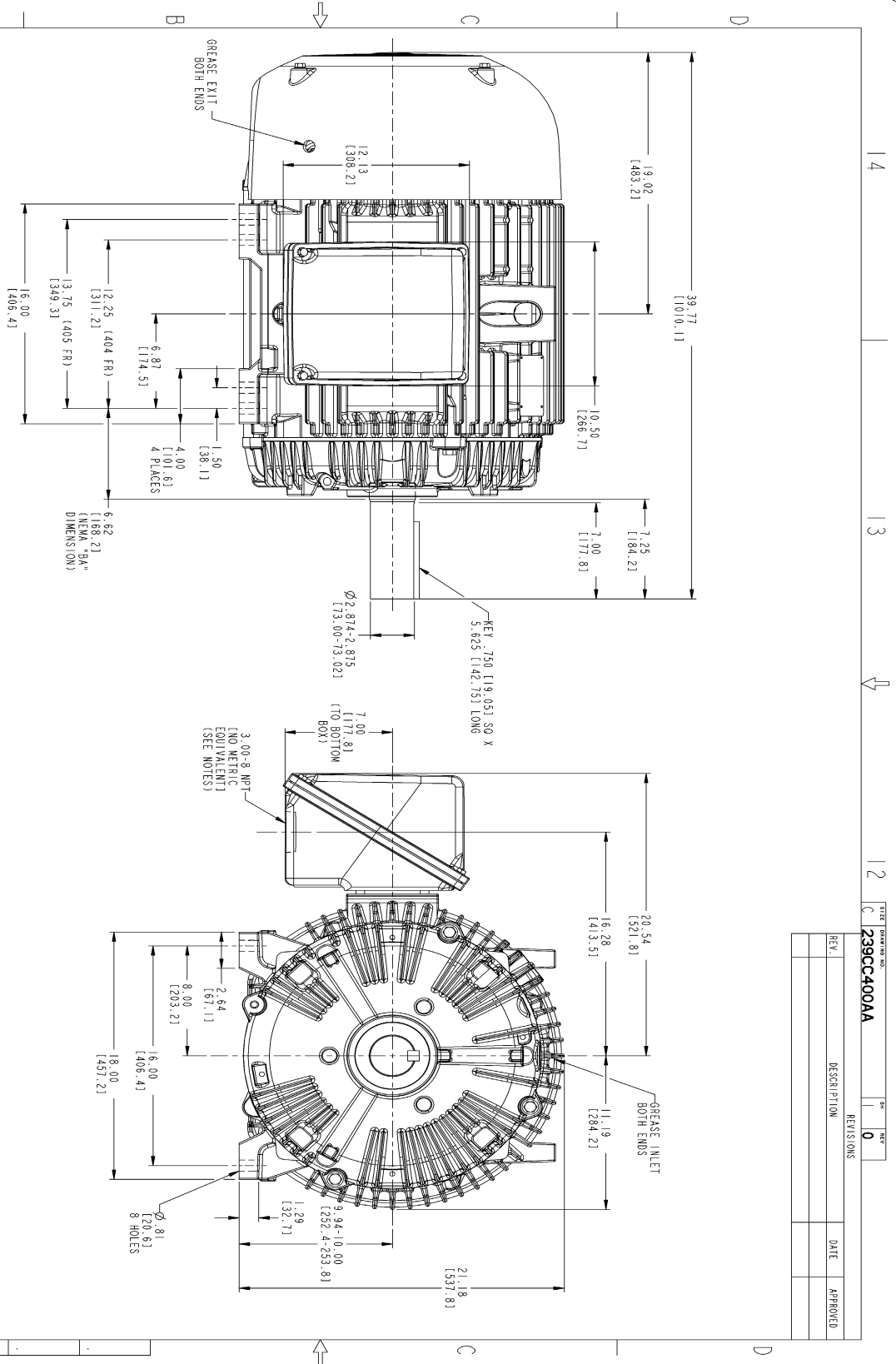
Open Circuit A-C:	0.662	Short Circuit D-C:	0.031
Short Circuit A-C:	0.047	X/R Ratio:	11.511
Stator Slots:	72	Rotor Slots:	58

Speed Torque Current Curve (First Connection, First Speed)



NAME:501352727 OBJECT:239CC400AA DATE:31-Jul-07 12:31:11

Marks:



- NOTES:
1. CONDUIT BOX MAY BE PLACED WITH THE ENTRANCE DOWN, UP OR ON EITHER SIDE.
 2. F-1 ASSEMBLY AS SHOWN.
 3. F-2 ASSEMBLY CONDUIT BOX ON OPPOSITE SIDE.
 4. BRACKETED DIMENSIONS ARE METRIC (MILLIMETERS).

REV.	DESCRIPTION	DATE	APPROVED

SIGNATURES	DATE	GENERAL ELECTRIC COMPANY
DESIGNED BY: SAJAN 01/21/07	01/21/07	Fort Wayne, Indiana
CHECKED BY: SAJAN 01/21/07	01/21/07	
ISSUED BY: SAJAN 01/21/07	01/21/07	
APPLIED PRACTICES		
SIZING		
SCALE: 0.220	REF. NO.:	
OUTLINE 404/405 T TEFC ESP 700 CU. IN. CONDUIT BOX 239CC400AA		
DISTRIBUTION: MMP		

Marks:

Connection Diagram
GEM2034E-FIG7

