

Product Information Packet

November 9, 2016

Data shown is for the current revision model #. Ensure your nameplate model # matches.

Model Number:	5KS364LAA205C
Catalog Number:	M7930
Instruction Manual:	GEI-56128
Connection Diagram:	GEM2034E-FIG9
Outline Drawing:	239CC200AA

Accessory Connection Diagrams			
Bearing Thermocouple:	None	Heater:	None
RTD:	None	Thermistor:	None
Thermostat:	None	Winding Thermocouple:	None
Bearing RTD:	None		

Table of Contents	
Specification	01
Performance Characteristics	02
Outline Drawing	03
Connection Drawing(s)	04



Marks:

MODEL NUMBER:	5KS364LAA205C	Estimated Weight:	960 Lbs
Outline Drawing:	239CC200AA	Time Rating:	CONT
Connection Diagram:	GEM2034E-FIG9	Enclosure:	TEFC
Instruction Book:	GEI-56128	Encl Construction:	SD
Design Code:	36BD1168A	Ambient Max(°C):	40
Type:	KS	Alt Ambient Max(°C):	--
Frame:	364T	Insulation Class:	F
Phases:	3	NEMA Design:	A
Poles:	4	Nominal Efficiency:	95.0 %
Output Power:	60HP 44.4KW	Guaranteed Efficiency:	94.1
RPM:	1785	3/4 Load Efficiency:	95.0
Voltage:	230/460	KVA Code:	G
Hertz:	60	Max KVAR:	24.2
Amps - FL:	147.8/73.9	Power Factor:	80.0
Service Factor:	1.15	Bearing - DE:	6314ZC3
Alt Service Factor:	--	Bearing - ODE:	6314ZC3

Enclosure is Totally Enclosed Fan-Cooled

Stamped Nameplate Notes:

INVERTER DUTY PER NEMA MG1 PART 31
 ALTERNATE RATING FOR PWM CONTROL:
 1.0 SF VAR TORQUE RANGE 0-60 HZ

Additional Information:

4P - T EXTN
 3/4" CU IN - 3.00" NPT
 OIL RESISTANT SLEEVING ON LEADS
 F1 MOUNTING
 VIBRATION LIMIT 0.15 INCH PER SEC

Performance Characteristics

1st Winding 1st Connection

Design: 36BD1168A

Marks:

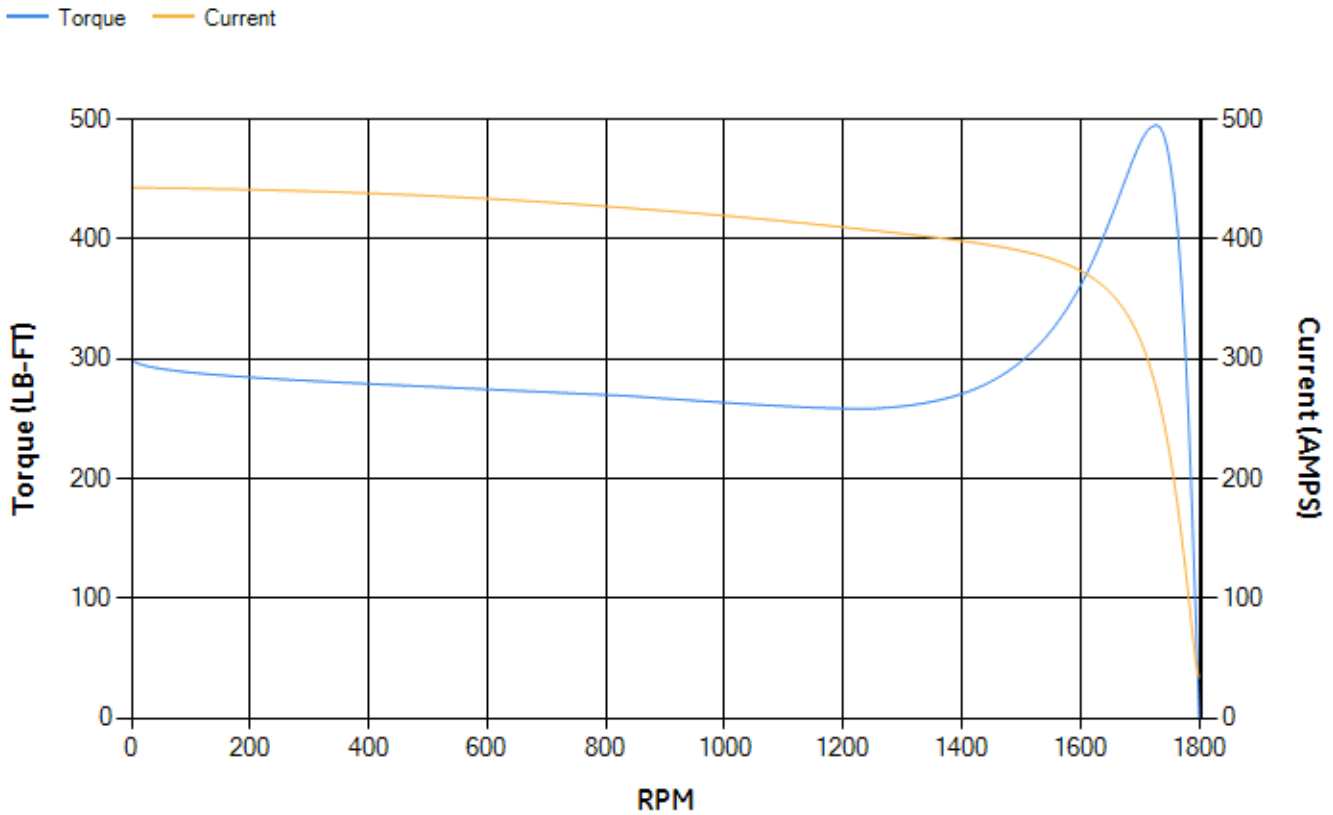
LOAD %	125.0	115.0	100.0	75.0	50.0	25.0	0.0
% EFF	94.38	94.59	95.04	94.99	94.48	91.61	0.00
% PF	82.74	81.9	80.03	74.41	63	40.38	3.08
AMPS	89.88	83.36	73.66	59.59	47.17	37.95	33.7

TORQ(FL)#FT	176.71	TORQ(LR)%FL	170	TORQ(BD)%FL	279.37
AMPS(LR)	442.98	PF AT START	0.31		

This motor is capable of two cold or one hot start with a maximum connected load inertia of 1199 Lb-Ft Sq (50.48 Kg-meter Sq)at 100% voltage, where the load torque varies with the square of the speed. Acceleration time with maximum inertia and the above load type is 30 seconds. Safe stall time at 100% voltage is 73 seconds cold, 36 seconds hot. Rotor inertia is 11.72 Lb-Ft Sq (0.49 Kg-meter Sq).

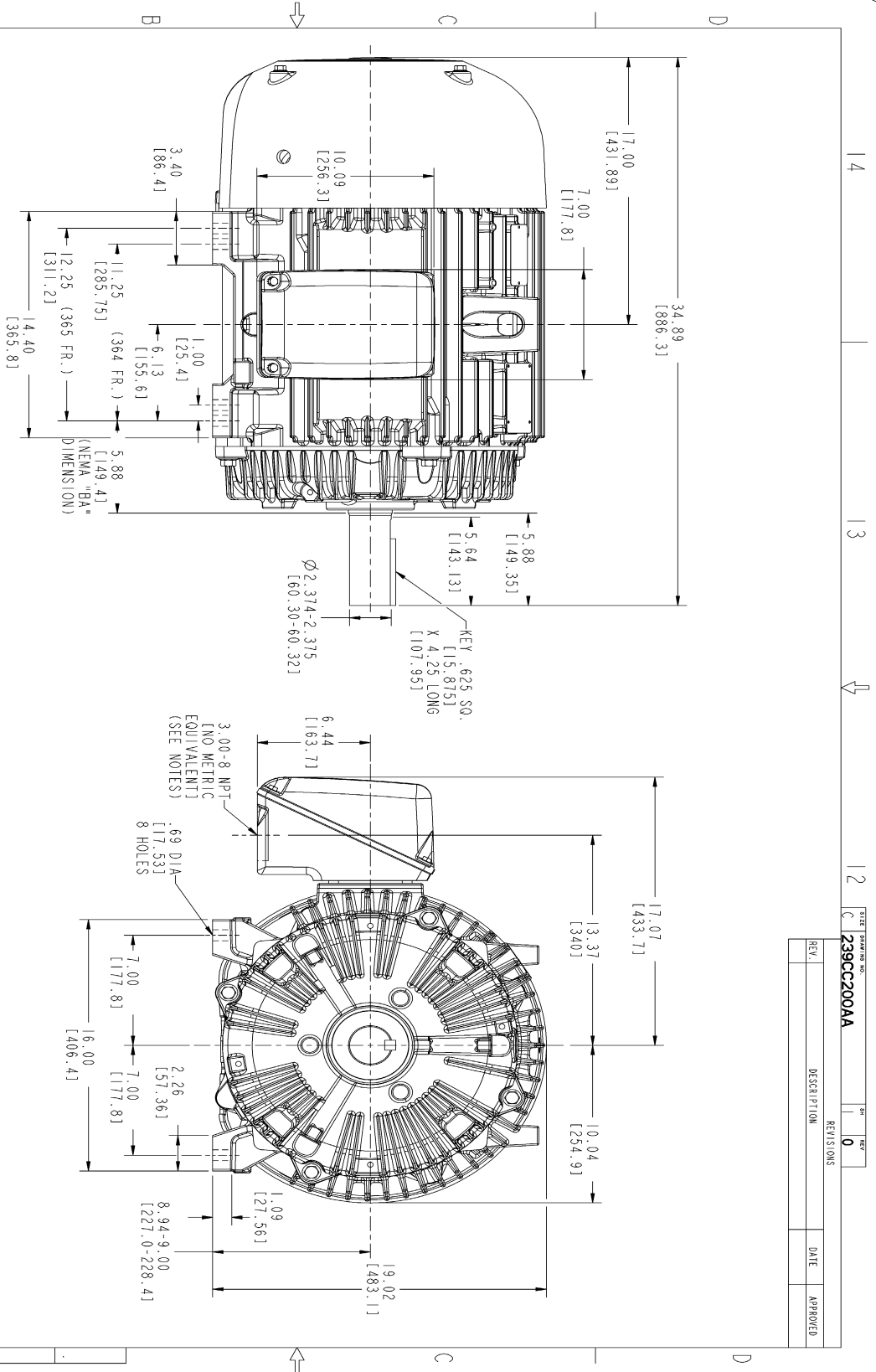
Open Circuit A-C:	0.551	Short Circuit D-C:	0.024
Short Circuit A-C:	0.035	X/R Ratio:	8.894
Stator Slots:	60	Rotor Slots:	50

Speed Torque Current Curve (First Connection, First Speed)



NAME:501352727 OBJECT:239CC200AA DATE:31-Jul-07 10:42:09

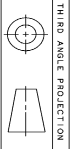
Marks:



NOTES :

1. CONDUIT BOX MAY BE PLACED WITH THE ENTRANCE DOWN, UP OR ON EITHER SIDE.
2. F-1 ASM AS SHOWN.
3. F-2 ASM-HAS CONDUIT BOX ON OPPOSITE SIDE.
4. BRACKETED DIMENSIONS ARE METRIC (MILLIMETERS).

REV.	DESCRIPTION	DATE	APPROVED



STIPULATURES	DATE	GENERAL ELECTRIC COMPANY Fort Wayne, Indiana
DRAWN SOUTHERN 01/26/07	01/26/07	
CHECKED SMLAN 01/26/07	01/26/07	
ISSUED SOUTHERN 01/26/07	01/26/07	
APPLIED PRACTICES	SIZING	364/365 T TERC ESP 346 CU. IN. CONDUIT BOX 239CC200AA
SCALE: 0.250	REF. NO:	SHEET 1 OF 1

DISTRIBUTION:

Marks:

Connection Diagram
GEM2034E-FIG9

