

Product Information Packet

November 7, 2016

Data shown is for the current revision model #. Ensure your nameplate model # matches.

Model Number:	5KS215ATE206A
Catalog Number:	E7734
Instruction Manual:	GEI-M1023
Connection Diagram:	GEM2034E-FIG7
Outline Drawing:	358B6215AB

Accessory Connection Diagrams

Bearing Thermocouple:	None	Heater:	None
RTD:	None	Thermistor:	None
Thermostat:	None	Winding Thermocouple:	None
Bearing RTD:	None		

Table of Contents

Specification	01
Performance Characteristics	02
Outline Drawing	03
Connection Drawing(s)	04



Marks:

MODEL NUMBER:	5KS215ATE206A	Estimated Weight:	157 Lbs
Outline Drawing:	358B6215AB	Time Rating:	CONT
Connection Diagram:	GEM2034E-FIG7	Enclosure:	DP
Instruction Book:	GEI-M1023	Encl Construction:	OPEN
Design Code:	21AD1007C	Ambient Max(°C):	40
Type:	KS	Alt Ambient Max(°C):	--
Frame:	215T	Insulation Class:	F
Phases:	3	NEMA Design:	A
Poles:	4	Nominal Efficiency:	91.7 %
Output Power:	10HP 7.4KW	Guaranteed Efficiency:	90.2
RPM:	1765	3/4 Load Efficiency:	92.5
Voltage:	200	KVA Code:	K
Hertz:	60	Max KVAR:	3.5
Amps - FL:	28.3	Power Factor:	81.5
Service Factor:	1.15	Bearing - DE:	6308ZZ
Alt Service Factor:	--	Bearing - ODE:	6208ZZ

Enclosure is Dripproof

Stamped Nameplate Notes:**Additional Information:**

4 POLE ODP
 LRA: 248.8 AMPS
 NO OF MOTOR LEADS: 3
 CONDUIT BOX VOLUME (IN³): 50.3
 CONDUIT BOX MTL: STAMPED STEEL
 GREASE TYPE: SHELL ALVANIA R3 LITHIUM GREASE
 50 HZ DATA: 10 HP, 200V, 34.3 AMPS @ 1.0 SF, 1470 RPM
 SOUND POWER: 69.8
 INVERTER DUTY PER NEMA MG1 PART 31
 FOR VARIABLE TORQUE LOADS

Performance Characteristics

1st Winding 1st Connection

Design: 21AD1007C

Marks:

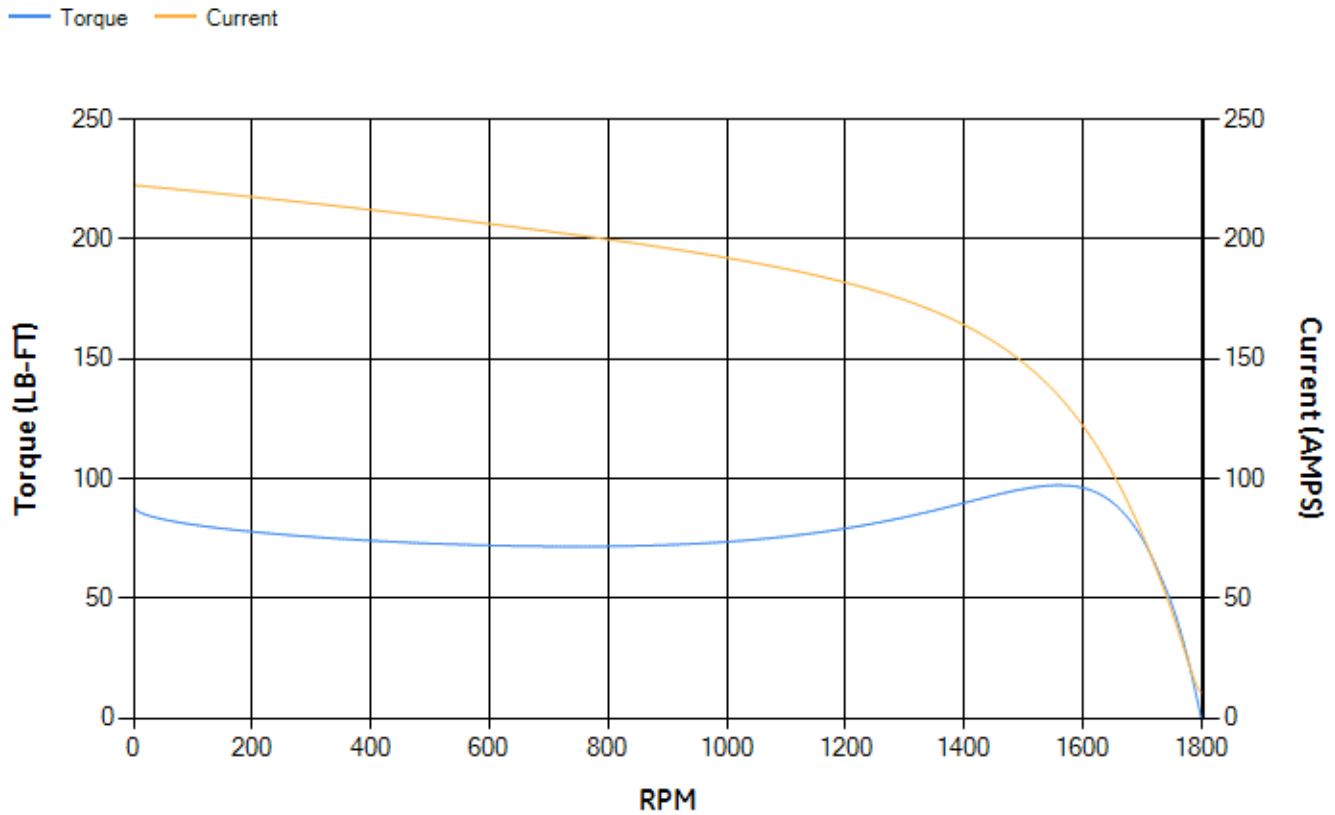
LOAD %	125.0	115.0	100.0	75.0	50.0	25.0	0.0
% EFF	90.87	91.34	92.13	92.52	92.21	88.83	0.00
% PF	84.52	84.09	82.9	78.77	69.34	47.76	5.38
AMPS	35.03	32.23	28.19	22.15	16.83	12.68	10.61

TORQ(FL)#FT	29.75	TORQ(LR)%FL	297.15	TORQ(BD)%FL	323.8
AMPS(LR)	222.54	PF AT START	0.43		

This motor is capable of two cold or one hot start with a maximum connected load inertia of 330 Lb-Ft Sq (13.89 Kg-meter Sq)at 100% voltage, where the load torque varies with the square of the speed. Acceleration time with maximum inertia and the above load type is 28 seconds. Safe stall time at 100% voltage is 70 seconds cold, 45 seconds hot. Rotor inertia is 1.01 Lb-Ft Sq (0.04 Kg-meter Sq).

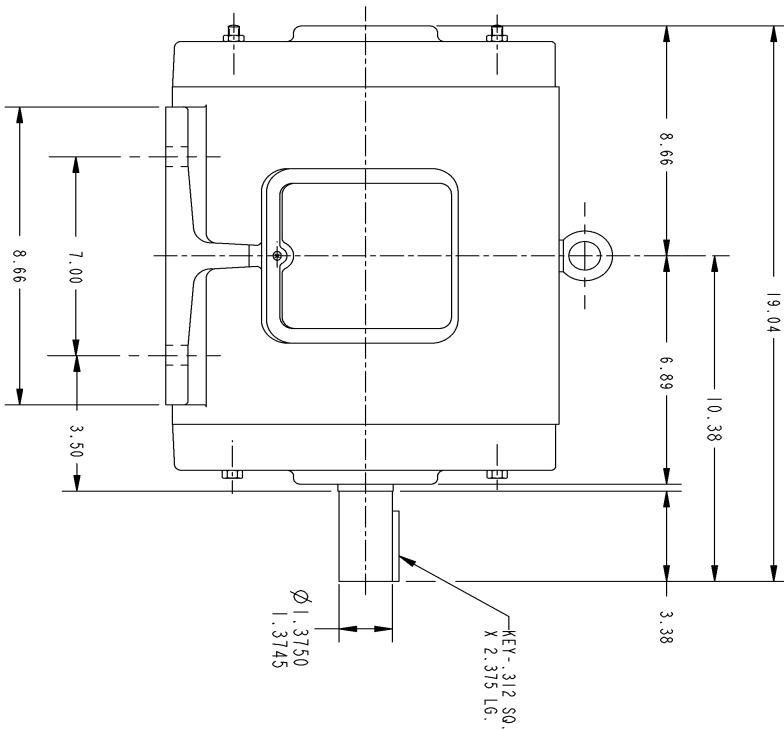
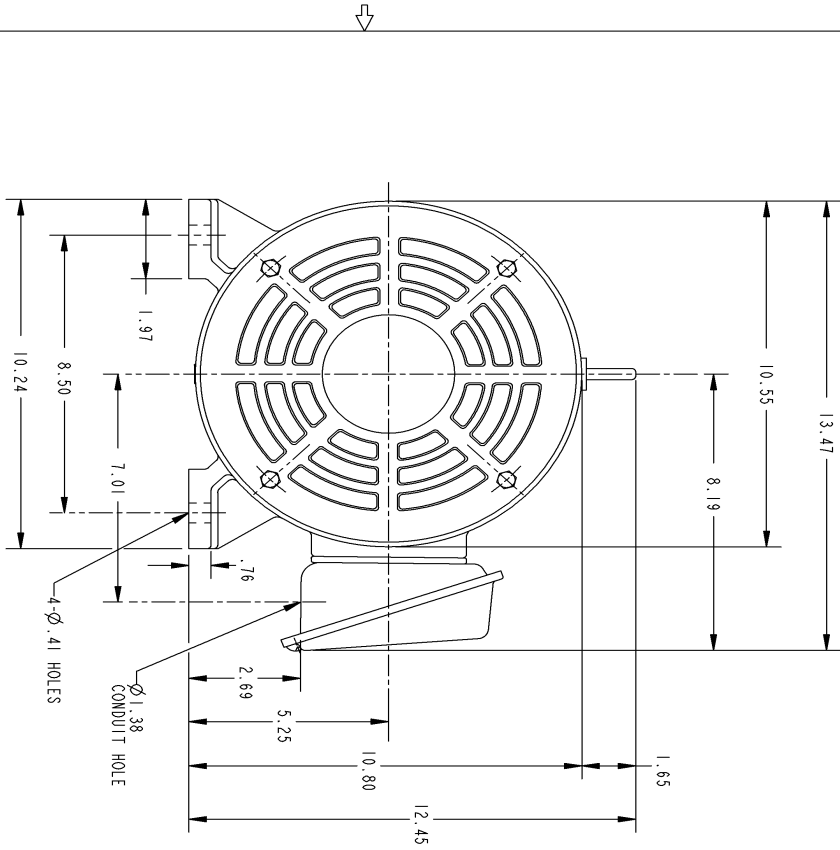
Open Circuit A-C:	0.355	Short Circuit D-C:	0.011
Short Circuit A-C:	0.015	X/R Ratio:	4.187
Stator Slots:	48	Rotor Slots:	40

Speed Torque Current Curve (First Connection, First Speed)



NAME:501452442 OBJECT:358B6215AB DATE:23-May-07 23:46:58

Marks:

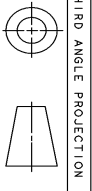


GE PROPRIETARY INFORMATION
 This drawing is the property of General Electric Company (GE) and contains confidential information. This drawing is loaned to the recipient for their use only. The information contained herein shall be disclosed to third parties only with the express written consent of GE. This drawing is not to be used for the reproduction of any part of the product or for any other purpose without the express written consent of GE. This drawing shall be returned to GE upon its receipt and shall not be subject to certain restrictions under U.S. Export Control Act and 22 CFR 175.

REV.	DESCRIPTION	DATE	APPROVED
1	ISAAC 07-0770	05/02/07	R. KOHNE

NOTES :

1. CONDUIT BOX MAY BE PLACED WITH THE ENTRANCE DOWN, UP OR ON EITHER SIDE.
2. F-1 ASM AS SHOWN.
3. F-2 ASM - HAS CONDUIT BOX ON OPPOSITE SIDE.



THIRD ANGLE PROJECTION

UNLESS OTHERWISE SPECIFIED:		SIGNATURES		DATE	
DIMENSIONS ARE IN INCHES		DRWN	P. RAJU	03/28/03	
TOLERANCE ON:		CHECKED	PRABHAKAR	03/27/03	
2 PL DECIMALS ± .		ENGRS			
3 PL DECIMALS ± .		ISSUED	PRABHAKAR	03/27/03	
ANGLES ± 1°		APPLIED PRACTICES			
MATERIAL:		SIZE/DRAWING		REV.	
		B		1	
		SCALE: DRAWING SCALE		SHEET 1 OF 1	

GE Industrial Systems
GENERAL ELECTRIC COMPANY
 Fort Wayne, Indiana

OUTLINE
215T - OPEN DRIP PROOF
358B6215AB

DISTRIBUTION:

Marks:

Connection Diagram
GEM2034E-FIG7

